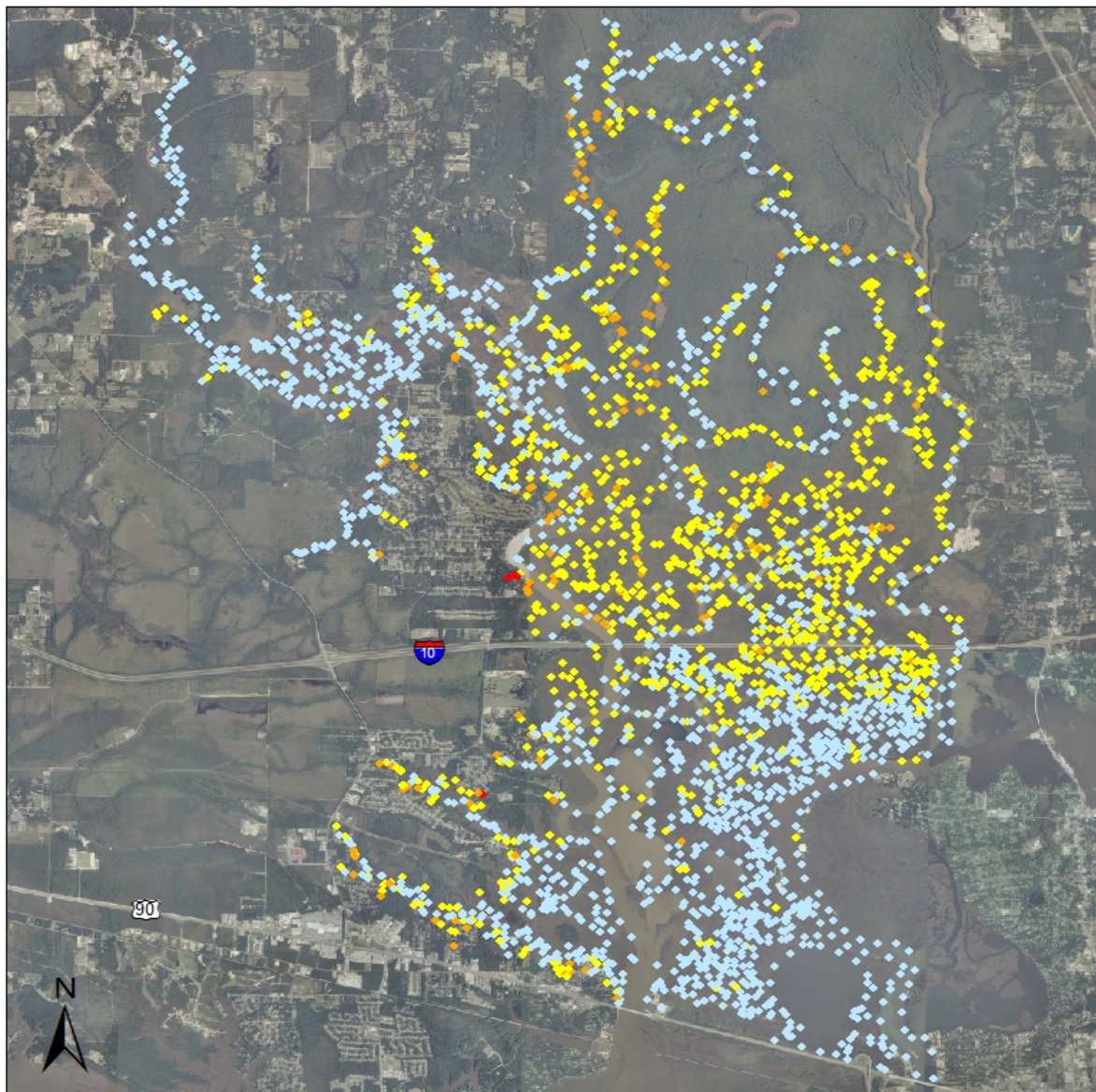


MS Activities

- Grand Bay NERR holding workshops for city and county employees
- Work on state plan continues (90% complete)
- Seeking funding for a statewide coordinator (CIAP)
- MDMR hired 2 part-time employees to work on invasive species issues
- MDWF&P/USGS/USM working eradication and control of tilapia in south Mississippi
- Completed initial field work on MDMR/USGS giant salvinia project in the Pascagoula River



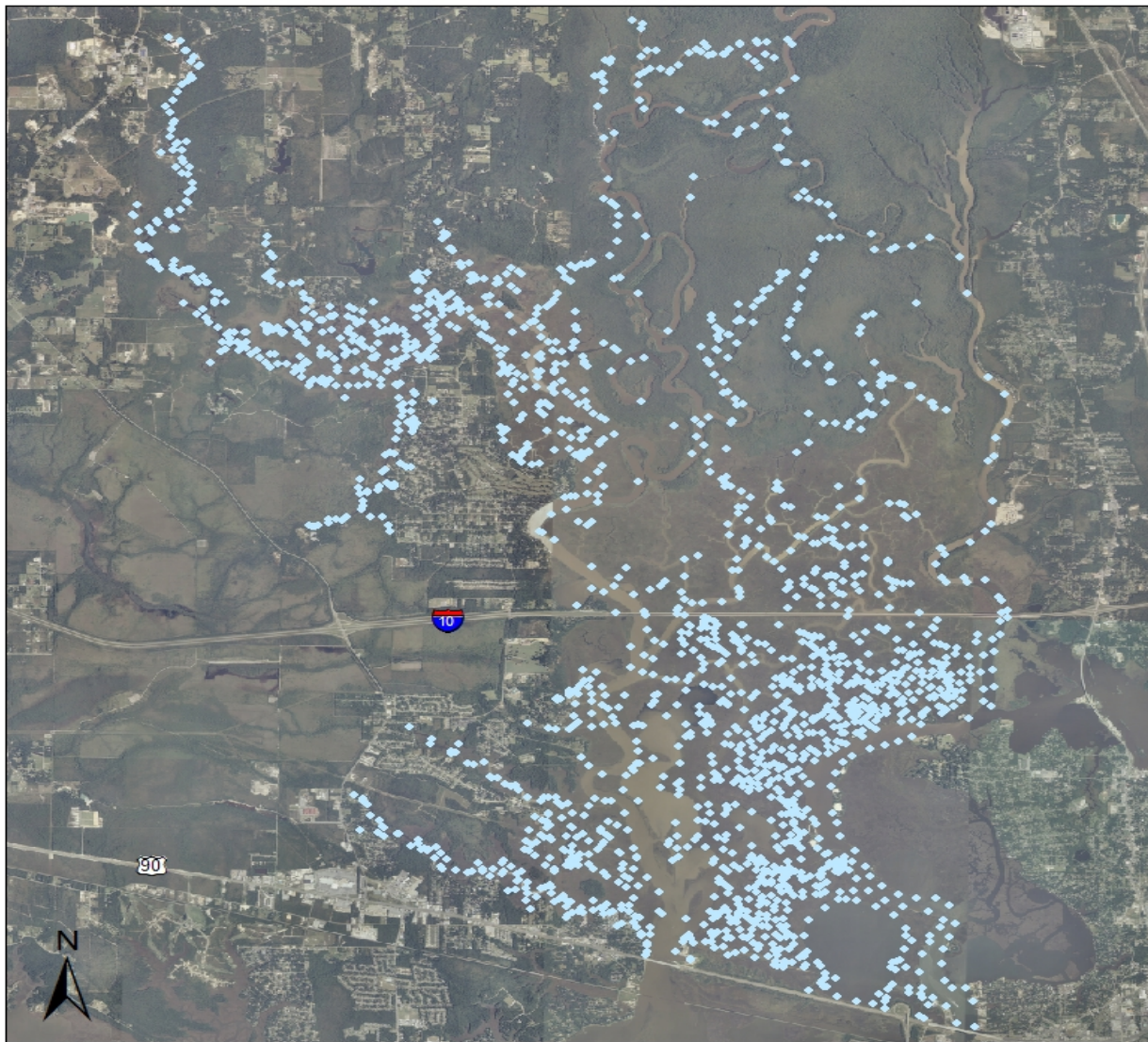
Lower Pascagoula River Salvinia Assessment

Additional Invasive Flora Noted

- ◆ Three Invasives
- ◆ Two Invasives
- ◆ One Invasive
- ◆ No Invasives

Kilometers
0 0.375 1.5 2.25 3





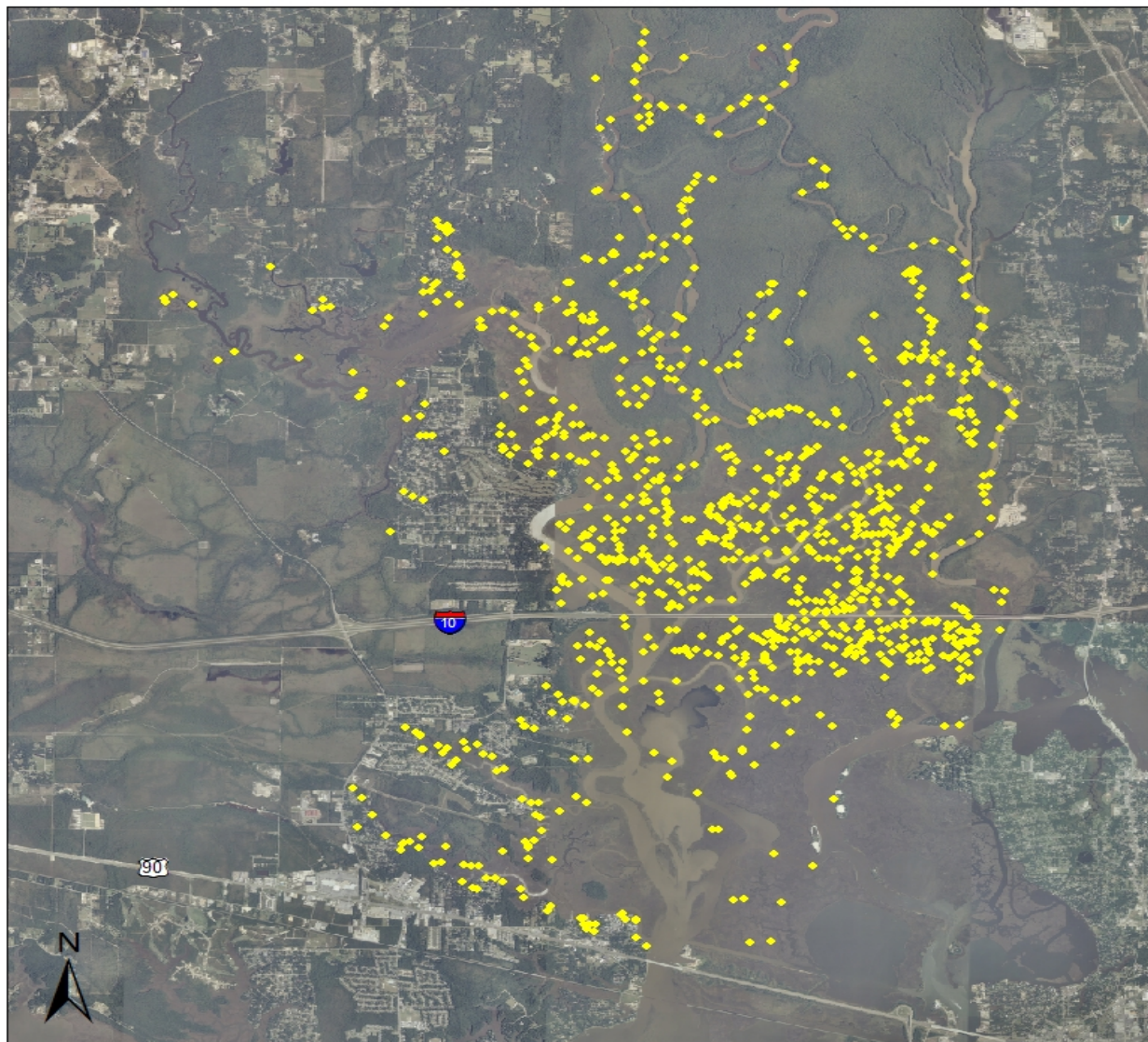
Lower Pascagoula River Salvinia Assessment

Kilometers
0 0.375 0.75 1.5 2.25 3

Additional Invasive Flora Noted

- Three Invasives
- Two Invasives
- One Invasive
- No Invasives





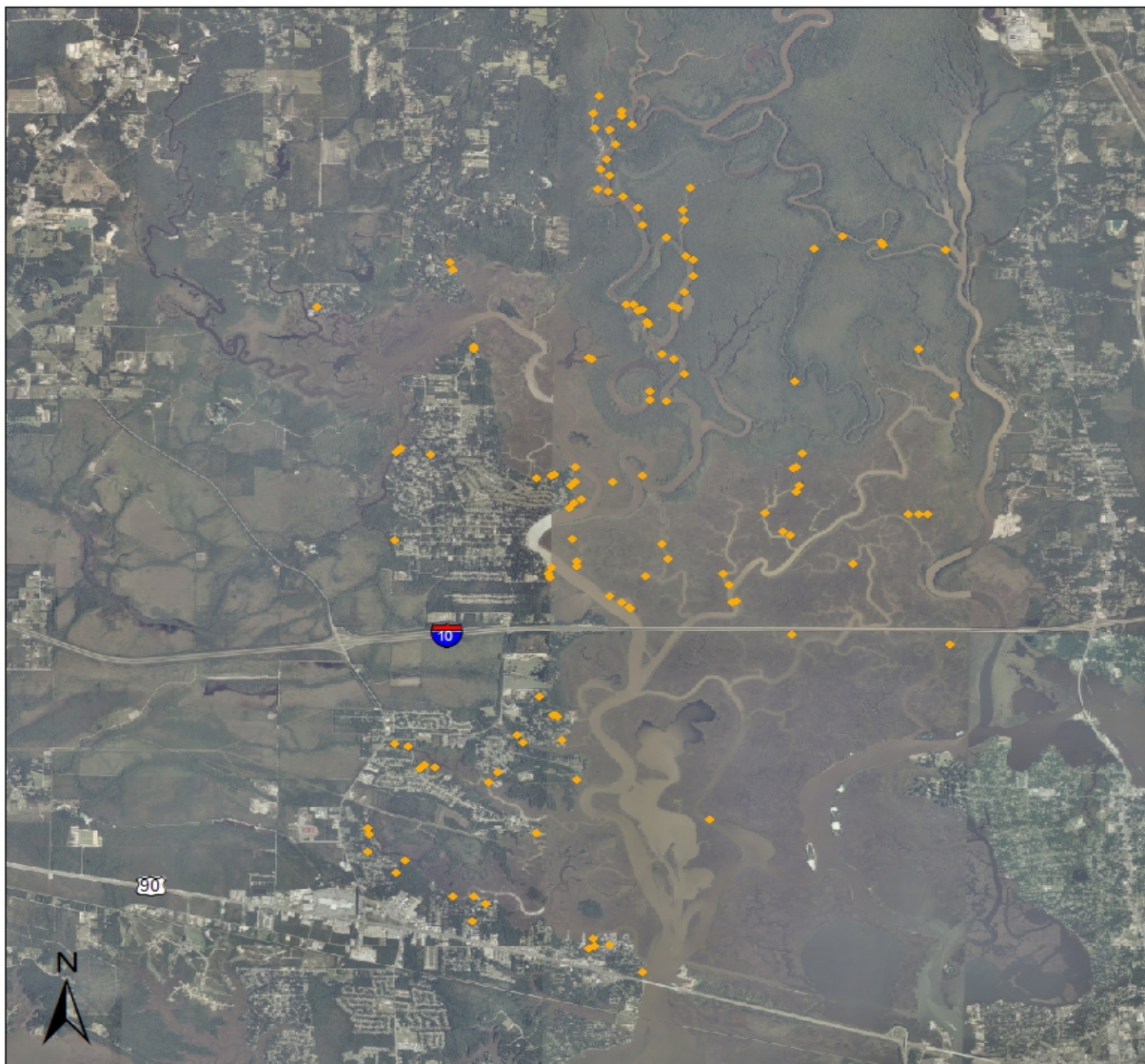
Lower Pascagoula River Salvinia Assessment

Additional Invasive Flora Noted

- Three Invasives
- Two Invasives
- One Invasive
- No Invasives

Kilometers
0.375 1.5 2.25 3





Lower Pascagoula River Salvinia Assessment

Additional Invasive Flora Noted

- Three Invasives
- Two Invasives
- One Invasive
- No Invasives

Kilometers
0 0.375 0.75 1.5 2.25 3





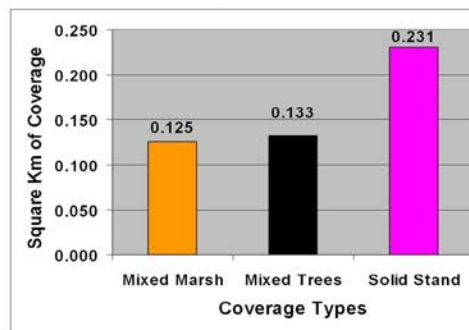
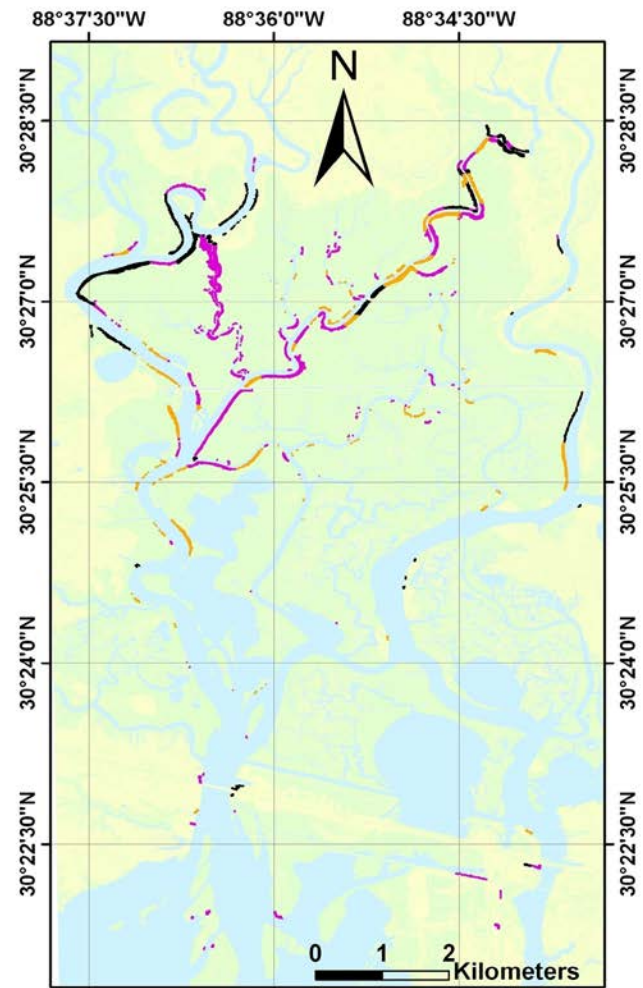
Lower Pascagoula River Salvinia Assessment

Additional Invasive Flora Noted

- ◆ Three Invasives
- ◆ Two Invasives
- ◆ One Invasive
- ◆ No Invasives

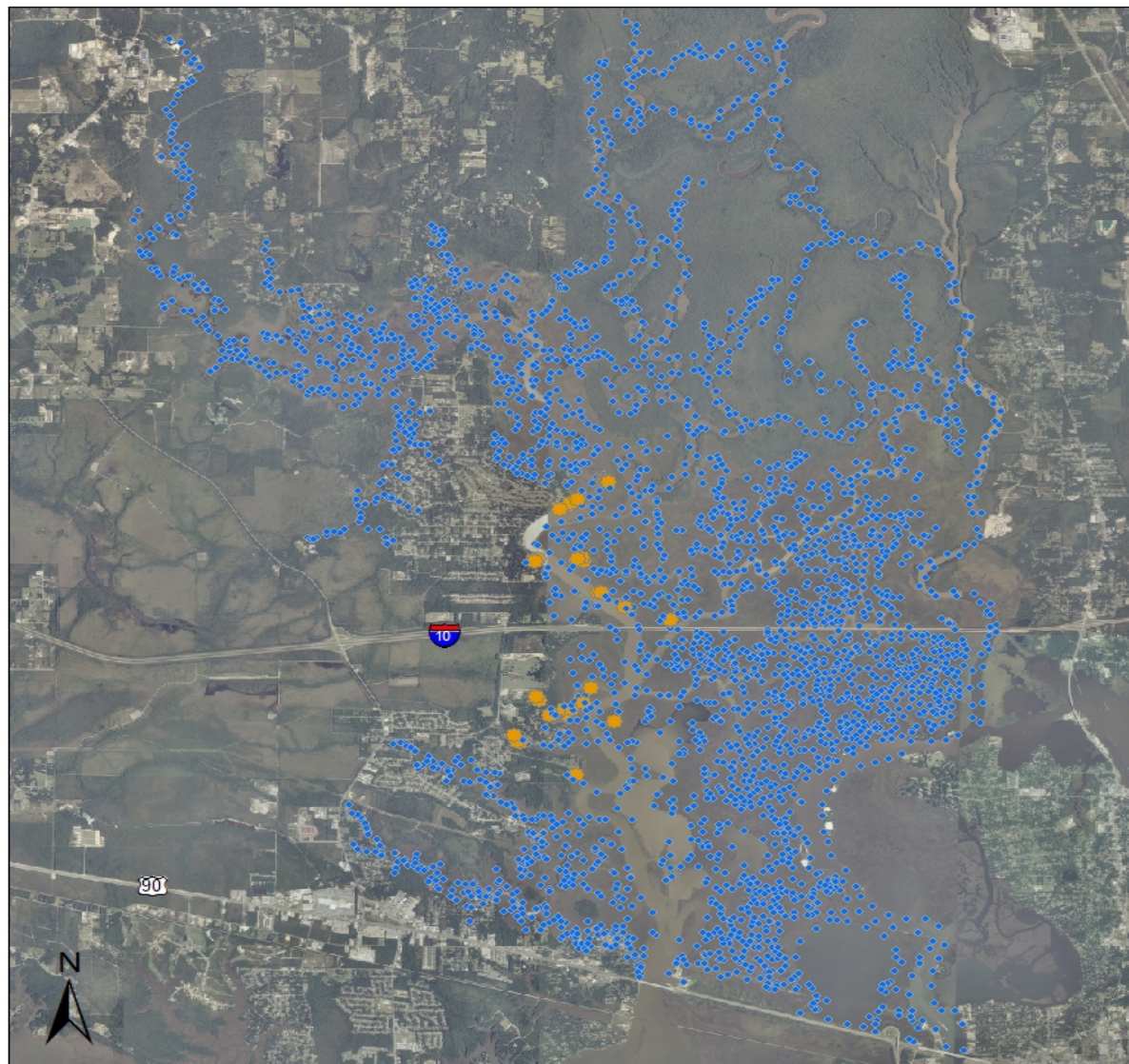
Kilometers
0 0.375 1.5 2.25 3





Legend

- Mixed marsh
- Mixed trees
- Solid stand



Lower Pascagoula River Salvinia Assessment

Kilometers
0 0.375 0.75 1.5 2.25 3

- Salvinia Detected
- No Salvinia Detected



