

# Species Updates June-October 2006

Pam Fuller  
USGS

# In the Southeast

- Spotted jellyfish (*Phyllorhiza punctata*)
  - Galveston Bay (June)
  - Lake Ponte Vedra St.Johns Co., FL (July)



# In Southeast

- Nile tilapia
  - Crane Creek in Melbourne, FL (April)



# Southeast

- tiger shrimp (*Penaeus monodon*)
  - Mississippi Sound (September) - Lesie





# In other areas (major jumps)

- Amur goby – new to US
  - Lower Columbia River

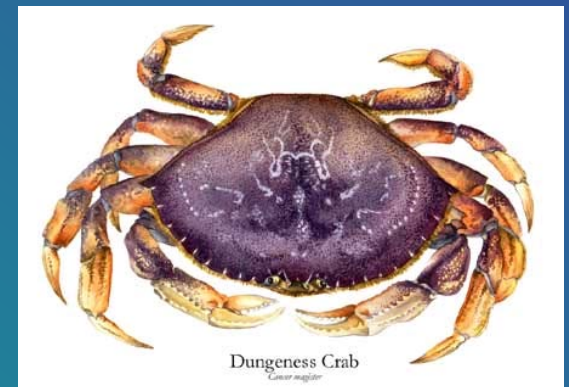


- Nile tilapia – new to Pennsylvania
  - Monongahela River near Pittsburgh



# In other areas (major jumps)

- Chinese mitten crab – new to East Coast
  - Chesapeake Bay (2)
- Dungeness Crab – new to East Coast
  - Coastal Massachusetts



# In other areas (minor)

- Pacu – all over (IN, MI, WI, MN, WY, UT, AZ)
- Ruffe - MI
- Silver carp – Lower Kansas R., KS
- Atlantic salmon – Kenai Peninsula, AK
- Fathead minnow – Willamette R., OR





# In other areas (expansions)

- Siberian prawn (*Exopalaemon modestus*)
  - Snake R., WA
- New Zealand mudsnail – MT, OR, MN\*
- Zebra mussel - OK, KS, MI, MO, IA
- Quagga mussel – Hudson R. and Saratoga drainages, NY
- Nutria - WA

