

GAMBIAN RAT ERADICATION IN GRASSY KEY



GAMBIAN RAT NATIVE DISTRIBUTION



GAMBIAN RAT BIOLOGY

last 1/3 of tail creamy
colored



prominent cheek pouch

- **OMNIVORE**
- **5-6 LITTERS/YR W/ 1-5 YOUNG**
- **COMMUNAL BURROWERS**
- **MONKEY POX OUTBREAK**

**2001 ESCAPE
SITE**





GAMBIAN RAT BAIT STATION



CAMERAS WITH INFRARED AND MOTION SENSORS



ERADICATION PLAN

INDEX OF ABUNDANCE

(RAT VISITS PER
CAMERA-NIGHT)



BAIT STATIONS WITH
RODENTICIDE

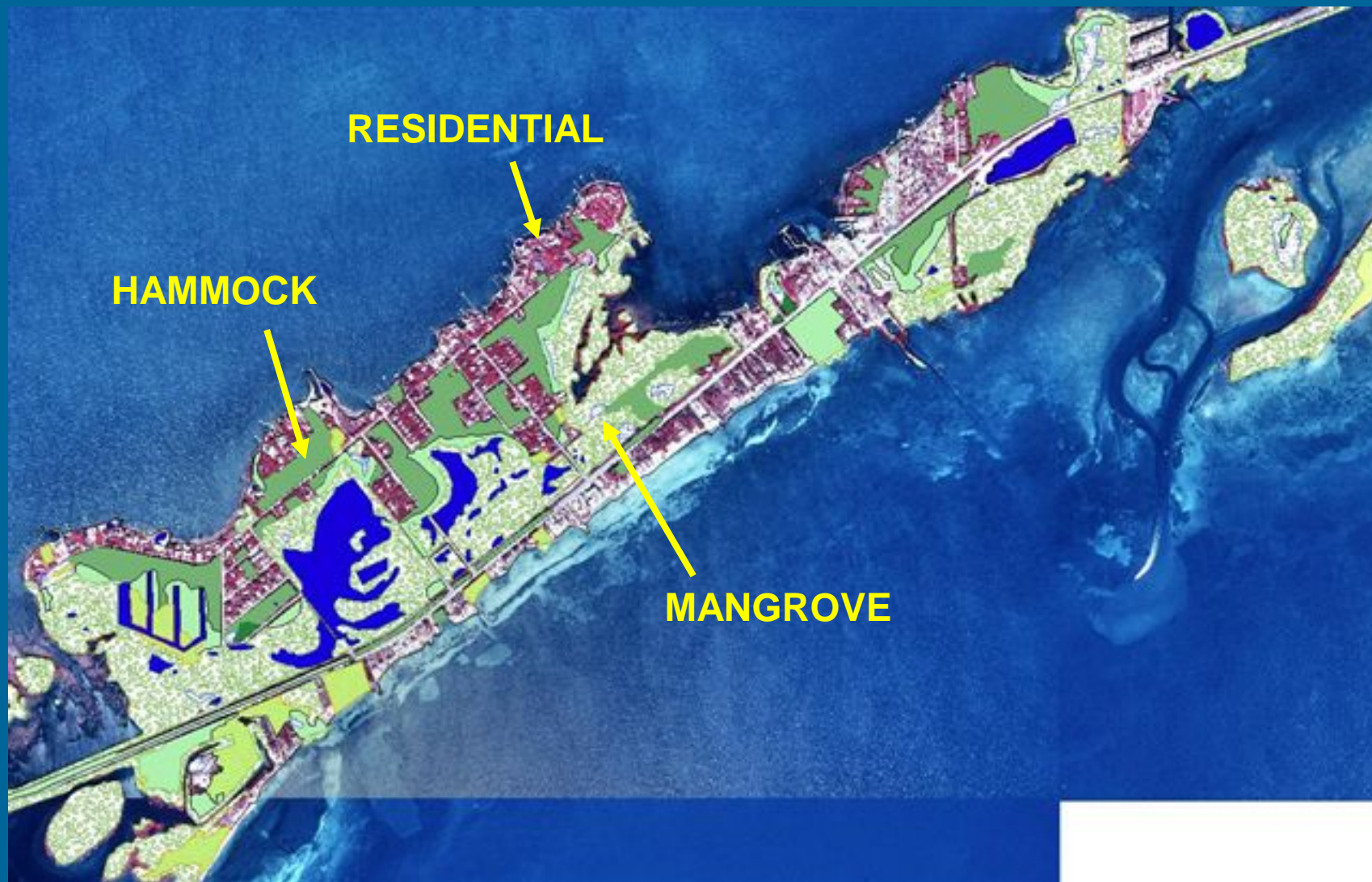


MEASURE SUCCESS VIA
SECOND CAMERA INDEX



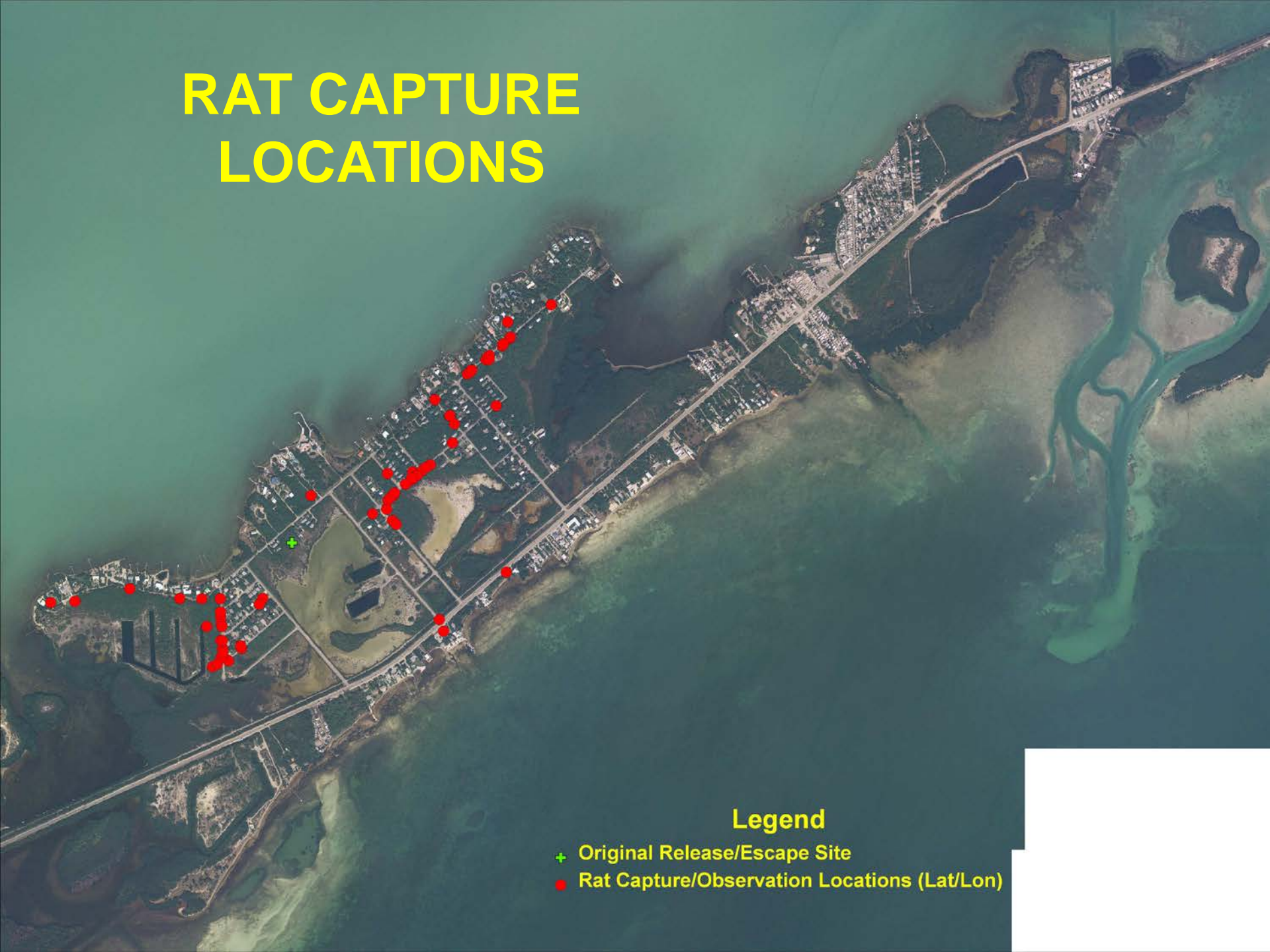
ZINC PHOSPHIDE MIXED WITH PEANUT BUTTER AND OATS







RAT CAPTURE LOCATIONS



Legend

- + Original Release/Escapes Site
- Rat Capture/Observation Locations (Lat/Lon)



**2001 – 8 RATS ESCAPE
FROM CAPTIVE BREEDER**

**JUNE, 2004 – USFWS
CAPTURES FIRST RAT**



**AUGUST, 2004 – PRELIMINARY TRAPPING BY
TEXAS A&M, FWC, USFWS**

**MARCH 2005 – MULTI-AGENCY MEETING TO
ESTABLISH ERADICATION PLAN**

JUNE 2006 – PILOT ERADICATION ON CRAWL KEY

JANUARY 2007 – ERADICATION INITIATED



SFWMD CONTRACTORS

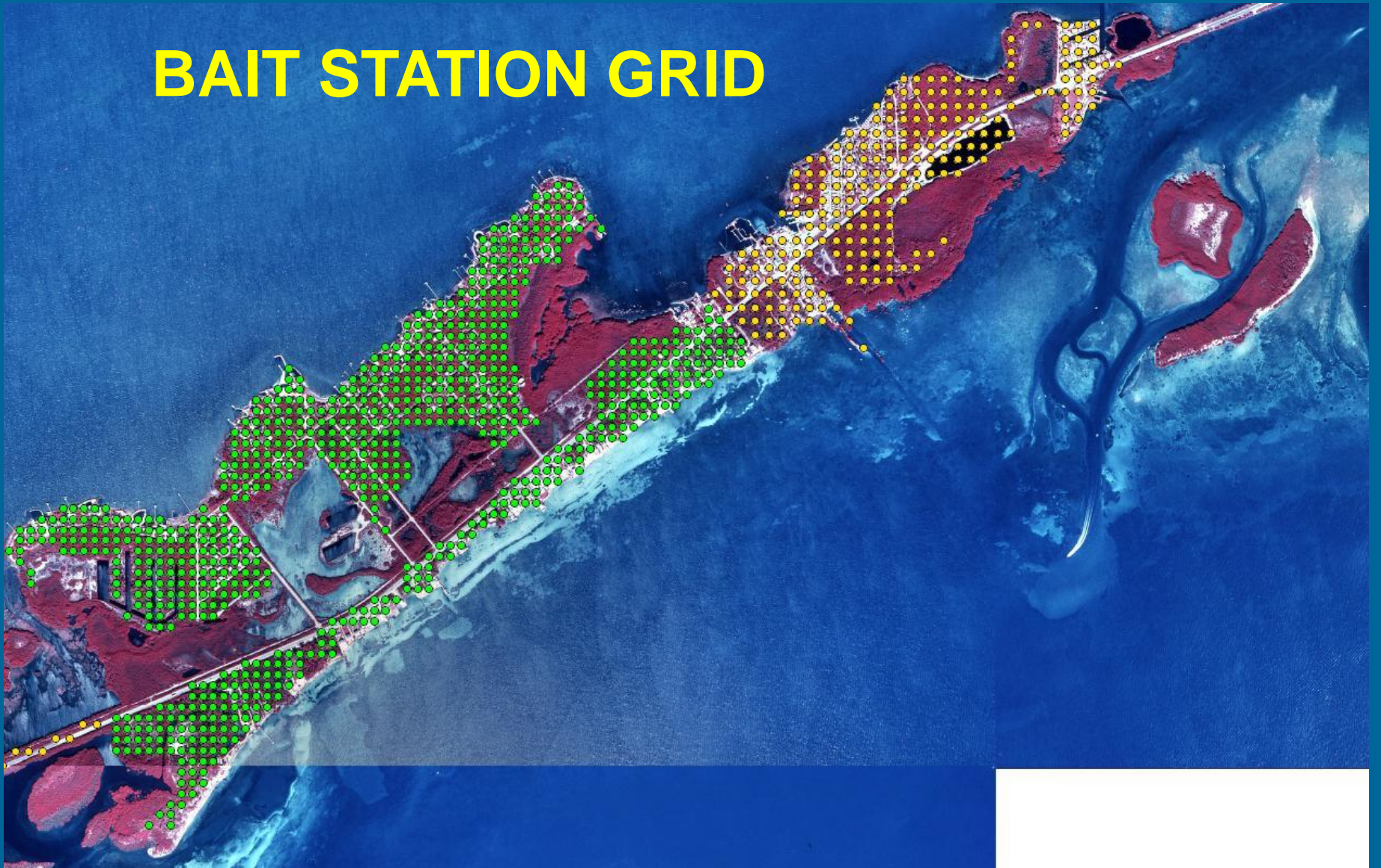


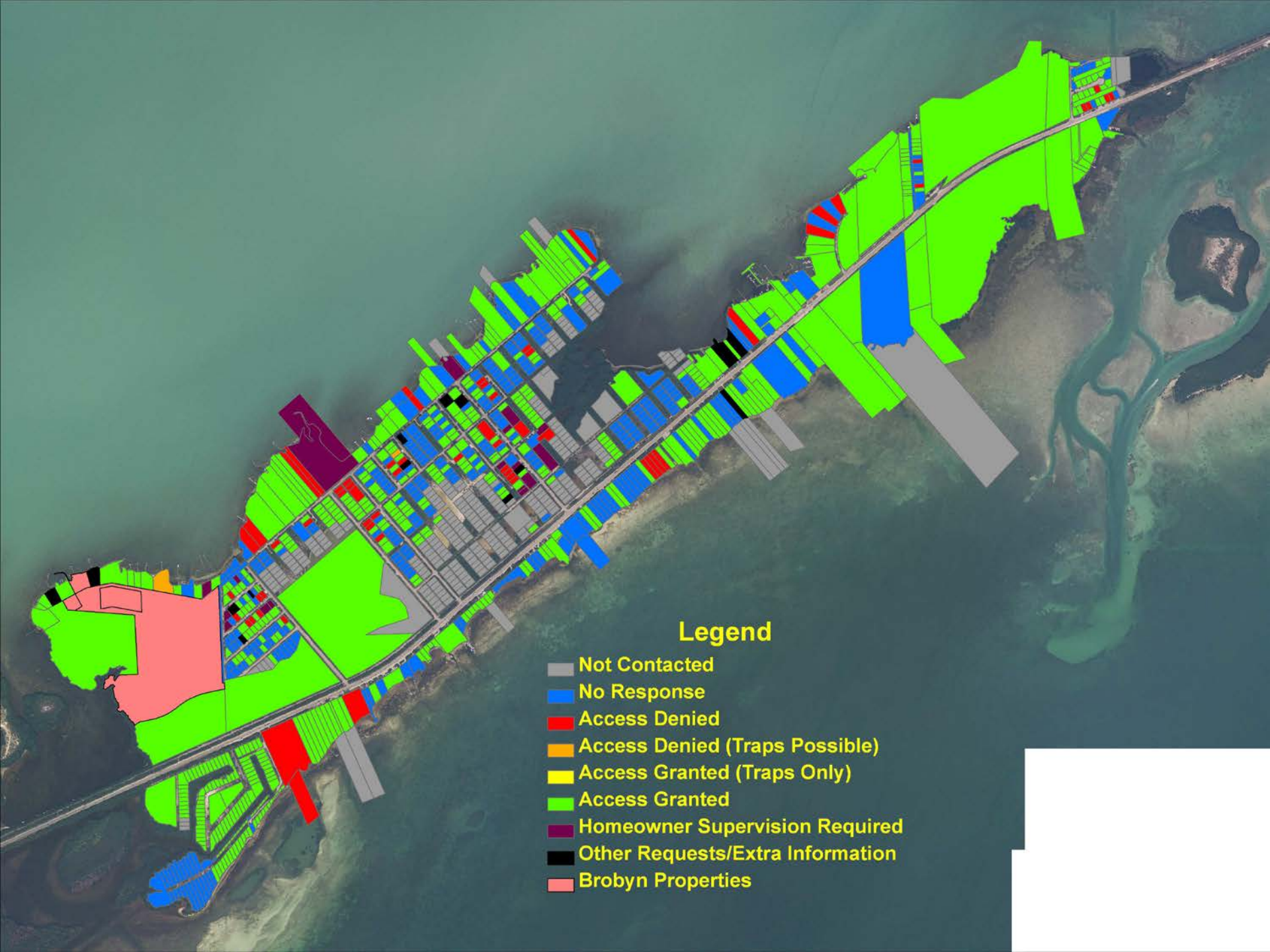
**USDA CONDUCTING ATTRACTANT AND 3RD
GENERATION RODENTICIDE RESEARCH**

NATIONAL GEOGRAPHIC



BAIT STATION GRID





Legend

- Not Contacted
- No Response
- Access Denied
- Access Denied (Traps Possible)
- Access Granted (Traps Only)
- Access Granted
- Homeowner Supervision Required
- Other Requests/Extra Information
- Brodyn Properties

A photograph of two men in a wooded area. The man on the left is wearing a white cap, a light blue long-sleeved shirt, and dark pants. He is kneeling and pointing towards the right. The man on the right is wearing a white cap, a light blue long-sleeved shirt, and dark pants. He is kneeling and holding a white cylindrical object, possibly a bait station, near a tree trunk. The background shows trees and dry ground.

600 BAIT STATIONS INSTALLED

MAY COMPLETION TARGET

\$150,000 SPENT

\$50,000 TO COMPLETE PHASE 1



QUESTIONS?

2003.01.02 01:50:02