

A photograph of a coastal residential area. In the foreground, there is a body of water with a muddy, brownish-green shoreline. In the middle ground, there are several large, multi-story houses with light-colored siding and dark roofs, surrounded by lush green lawns and tall pine trees. A small wooden pier or dock extends into the water. The sky is blue with scattered white clouds.

# Politics Involved with Utilizing Herbicides and Biological Controls



# Politics:

Competition between competing  
interest groups or individuals for  
power and leadership





**Quicker**

**More reliable**

**No new organisms**

**Easy to use**

**More precise**

**More benign**



**Cheaper**

**Results less certain**

**No Chemicals**

**Complicated**

**More precise**

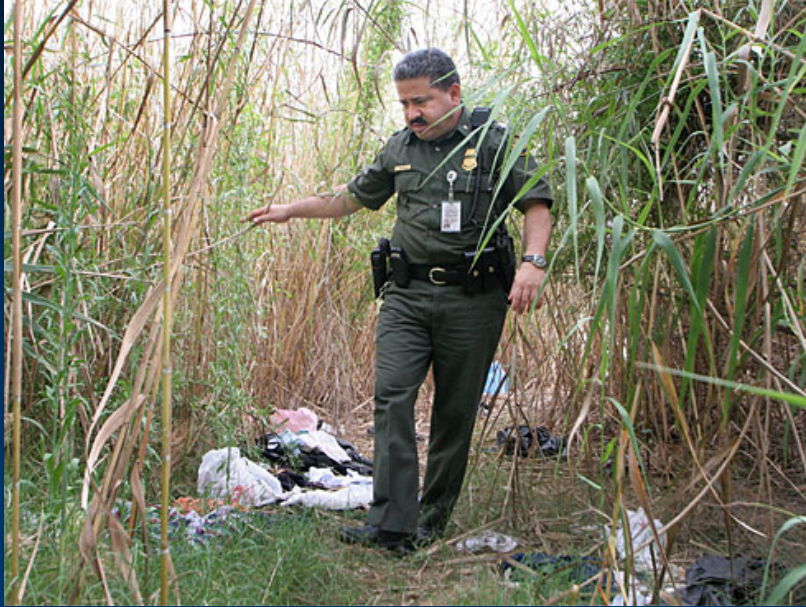
**More benign**



# *Arundo donax*







**Leaning toward  
herbicides**

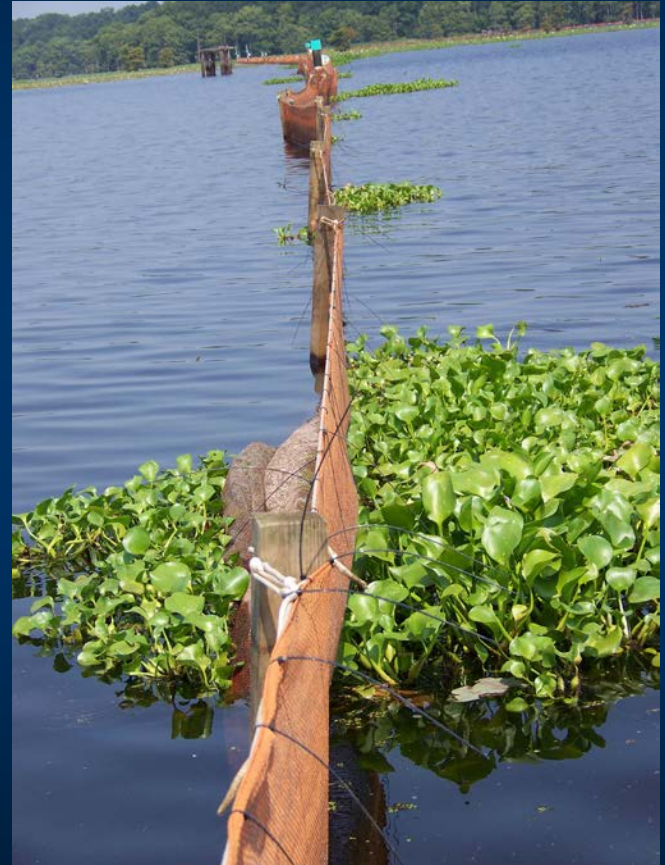




# Caddo Lake



One way fence







**\$120,000 mandate**

**A nearly \$700,000  
plan developed**







**Saltcedar**



# Salt Cedar and Russian Olive Control Demonstration Act (SCROCDA)

- Public Law 109-320 on October 11, 2006
- Administered by the Secretary of the Interior through the Bureau of Reclamation and the USGS – in cooperation with the Secretary's of Ag and Defense
- \$20 million for fiscal year 2006 and \$15 million for each of fiscal years 2007 through 2010 – 75% maximum cost share for NON-Federal lands
- Sen. Domenici (NM) - Chaired Energy and Water Development Appropriations Subcommittee and Committee on Energy and Natural Resources.





- To facilitate information exchange
- To help acquire of federal funds

TEXAS  
FOREST & STREAM  
DEPARTMENT OF WILDLIFE

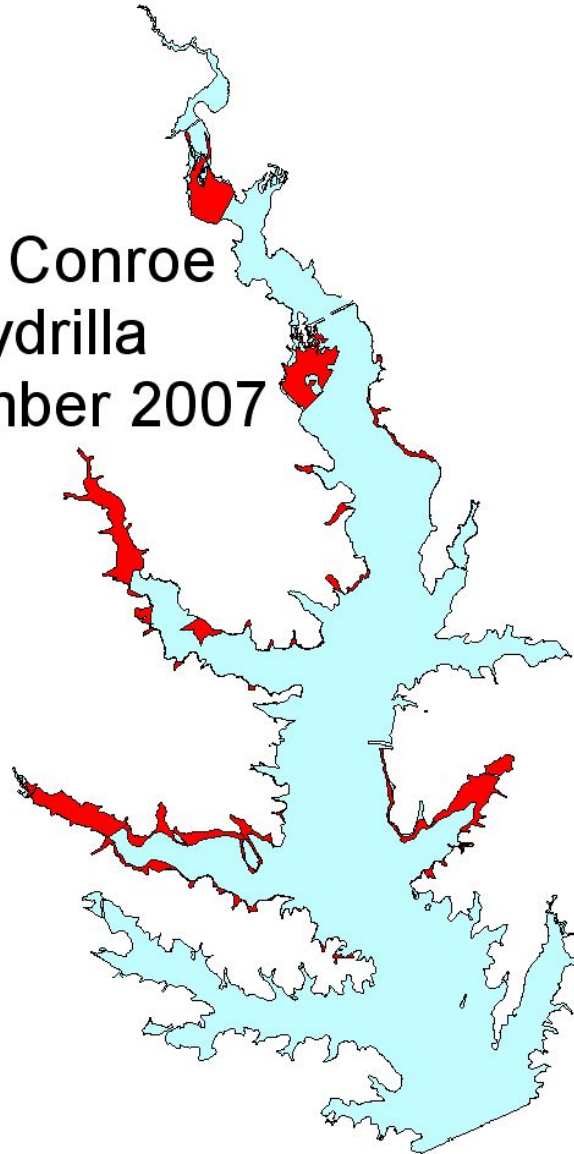




# Lake Conroe

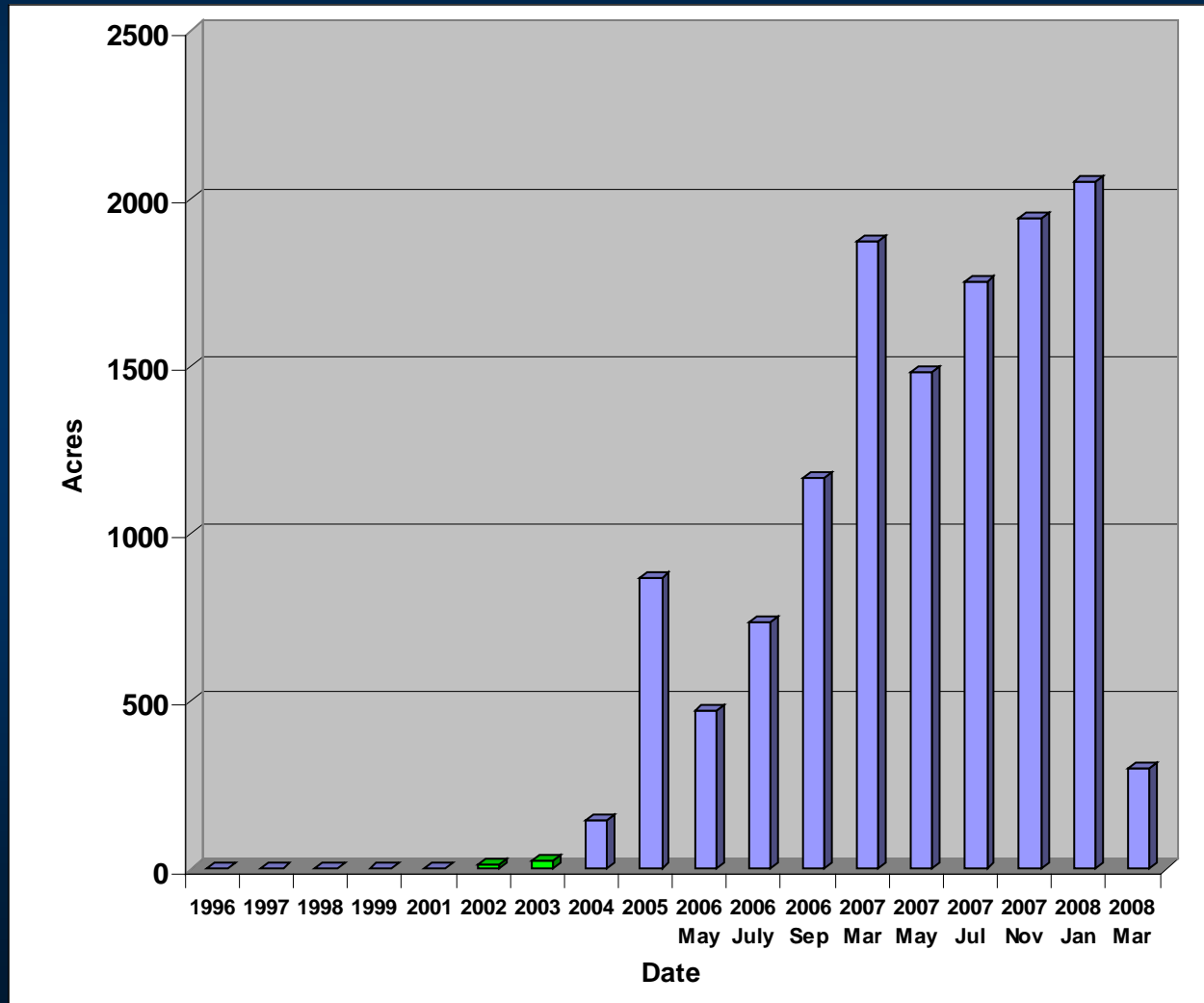


Lake Conroe  
Hydrilla  
November 2007





# Hydrilla acreage 1996-2008







**TEXAS**  
**PARKS &**  
**WILDLIFE**