



## Lionfish Update



Lad Akins, Director of Special Projects  
Reef Environmental Education Foundation



# Lionfish in the Atlantic





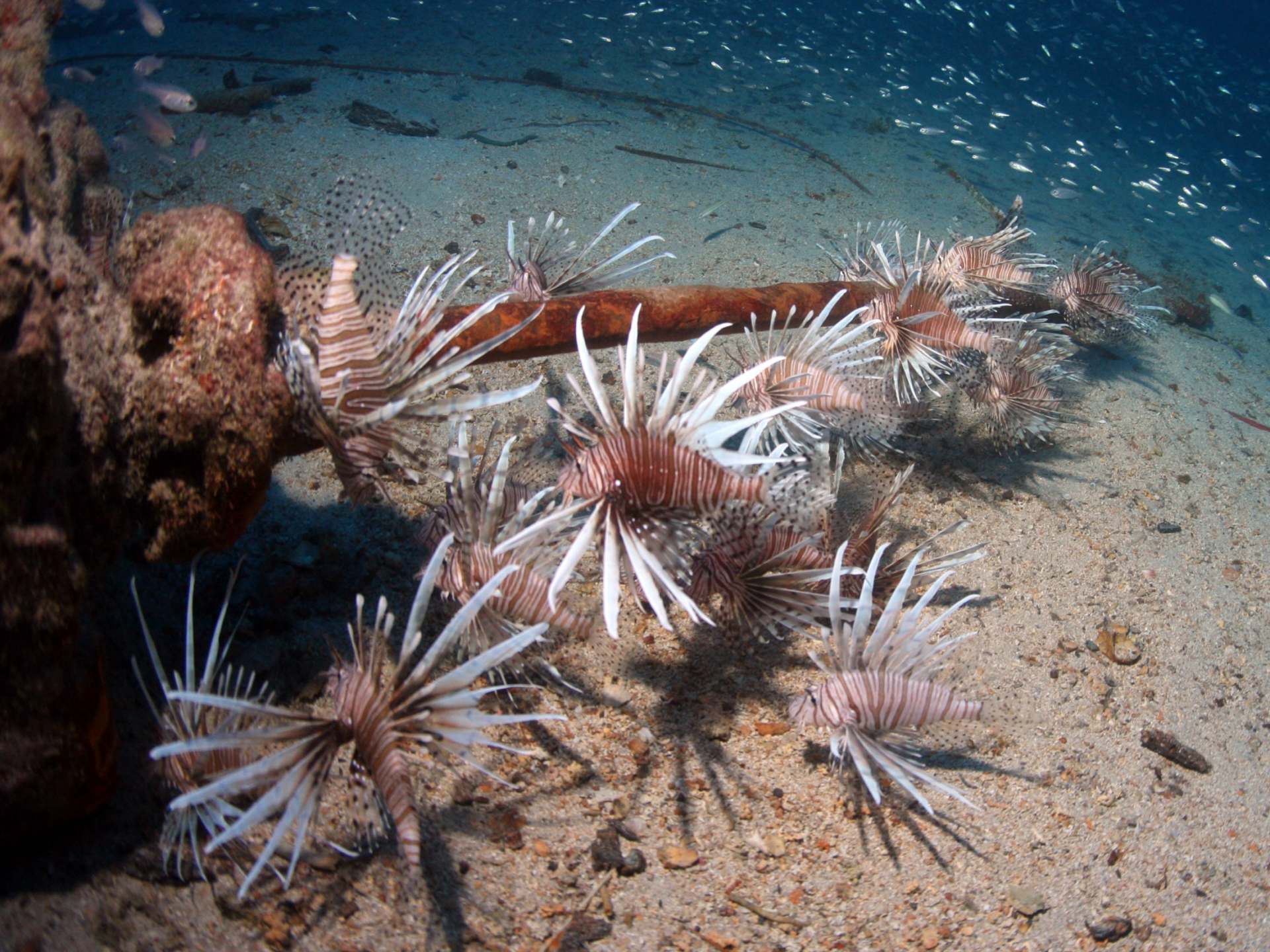
1985















# Update

## Current

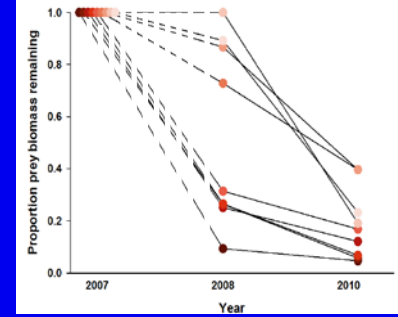
- Papers
- Collecting/Handling Workshops
- Derbies
- Reporting
- NPS Control strategy (Chris)
- ANSTF Ad-Hoc committee (James)
- Regional Best Practices Manual
- Current Research
- Media

# Update

# Current

- Papers

- Green et al (consumption rates 3x lab estimates)
- Green et al (65% decline in prey)
- Cote and Green (climate change affect local control)
- Badillo et al (sting paralysis)
- Munoz et al (hardbottom diet variation)
- Layman and Algiers (diet specialization)
- Jud et al (lionfish in estuaries - 5.5km)
- Jud and Layman (site fidelity in Loxahatchee)





# Update

## Current

- Collecting/Handling Workshops
  - W FL (Ft Myers, St Pete, Destin) (USFW)
  - SE FL (Miami, Palm Beach, Broward) (CPI w/ Seagrant)
  - Keys (FKNMS)
  - GCFI, Bahamas (NFWF)





# Update

## Current

- REEF Derbies
  - Abaco
  - Palm Beach
  - Fort Lauderdale
  - Miami
  - Key Largo
- Many other international





# Update

## Current

- Reporting
  - ~half dozen reports/day
  - mostly internet
  - working on phone app
  - standardize reporting numbers (?)



# Update

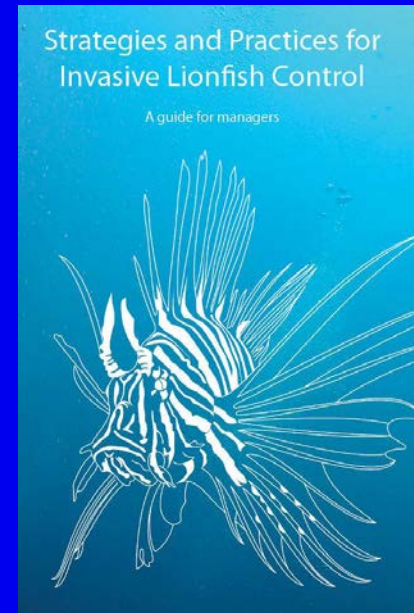
## Current

- NPS Lionfish Response Plan (Chris)
- ANSTF Ad-Hoc lionfish committee (James)

# Update

## Current

- Regional Best Practices Manual
  - 5 chapters (Management Framework, Education/Outreach, Control, Monitoring, Research)
  - Published through GCFI (new series)
  - Available summer 2012





# Update

## Current

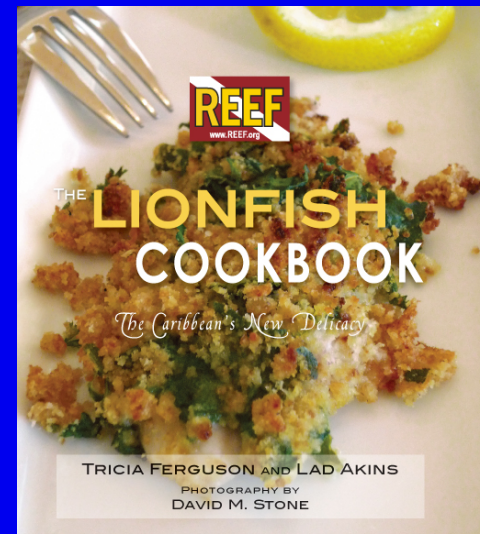
- Current Research
  - Lobster by-catch
  - Removal frequency
  - Microhabitat association
  - Target density
  - Re-colonization



# Update

## Current

- Media
  - Print
  - CNN International
  - NBC Nightly
  - ZED (French TV)
  - NOS Podcast
  - Pet amnesty day
  - Cookbook reprint

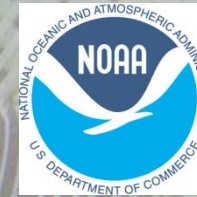




# Upcoming

- Research
  - acoustic tagging
  - derby effectiveness
  - movement
  - target densities
- Local control is effective
- Market development – many locations offering LF, 6,000 lbs Gary Nichols, aquarium trade
- International training workshops
- Internet based training
- Regional strategy and web portal (GCFI)





*Thank you!*