

# IMPLEMENTATION OF THE NATIONAL LIONFISH PREVENTION AND MANAGEMENT PLAN IN THE GULF OF MEXICO



Read D. Porter  
Environmental Law Institute

Gulf and South Atlantic Regional Panel  
Houston, Texas  
September 2014

# ENVIRONMENTAL LAW INSTITUTE

1969-2009: Celebrating 40 years  
Headquartered in Washington, DC  
with offices around the country

- Independent Research
- Publications
- Training and Seminars

*We make law work for people, places,  
and the planet*

# INVASIVE SPECIES PROGRAM

Launched in 2000 as an initiative of the *Center for State, Local, and Regional Environmental Programs*

- Publications
- Seminar Series
- Workshops



# Current invasive species activities

- Founding member of National Environmental Coalition on Invasive Species (NECIS)
- Co-sponsoring webinar series with National Invasive Species Council
- Ongoing work across the state and federal policy landscape
  - Bioenergy state model law (& federal policy)
  - implementation of plant risk assessment
  - Introduction and movement of shellfish
  - Other issues
- **Resource for policymakers**

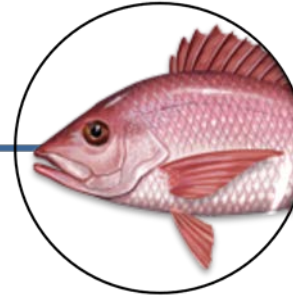
# Other work in the Gulf of Mexico and Caribbean

- ***Fisheries Management:*** Enforcement and compliance studies, including in Gulf snapper and grouper fisheries (through NSGLC)
- ***Aquaculture:*** improving policy and implementation for aquaculture in federal ocean waters
- ***Deepwater Horizon:*** Educating the public on how to engage on DWH response for restoration
- ***Ocean management:*** Developing new laws in Antigua and Barbuda, evaluating MPA enforcement laws across Caribbean
- ***Offshore oil and gas:*** Working with BSEE to develop new tools to improve safety and environmental compliance

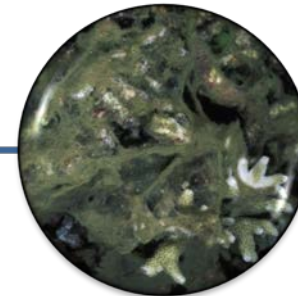
# Lionfish



Up to 1000  
per acre, 79%  
reduction in  
reef fish  
populations



Economic impacts on  
fisheries and tourism



Undermines  
coral reef  
health



# Need for Lionfish Response

- Lionfish are spreading and impacts are increasing
- Lower capacity to respond in western Gulf
- Management is needed to mitigate harm to fisheries and protect fragile reef ecosystems
- GSARP-led *National Lionfish Plan* to be adopted by ANSTF in November
- Unique opportunity now to move from *planning* to *action*

# Project concept

- Move from national plan to implementation at state or regional level by creating *action plans*
- 1-2 day expert workshop to
  - Identify collaborators
  - Determine resource availability to carry out NLP elements
  - Identify gaps and additional needed resources / capacity
- Action Plan will enable collaborators to
  - Start implementing NLP in a cohesive manner that integrates science, management, and policy action
  - Build links across expert networks
  - Seek resources to fill identified gaps



# Scale

- Start in Texas to develop model
- Expand on a state-by-state or regional basis
  - Western Gulf
  - Florida
  - South Atlantic
  - elsewhere, as lionfish spread

# Budget

- Estimated need:
  - Initial workshop: \$25,000 (Texas),
  - Each subsequent workshop: \$15,000
- Budget elements:
  - Travel for participants
  - Meeting costs
  - Labor
    - workshop design
    - action plan/workshop report

# Current Project Partners

- Environmental Law Institute
  - Read Porter, Director, Invasive Species Program
- The Nature Conservancy
  - Dr. Jorge Brenner
- Texas Sea Grant
  - Pam Plotkin, Executive Director

# Consultation

- US Fish and Wildlife Service
- NOAA Headquarters
- NISC and ANSTF staff
- Flower Garden Banks NMS
- Texas Parks and Wildlife Department
- Key Biscayne National Park
- Harte Institute / TAMU Corpus Christi
- Texas State Aquarium

# Project endorsements to date

- Environmental Law Institute
- The Nature Conservancy
- Texas Sea Grant
- Flower Garden Banks NMS
- NOAA – NISC Liaison

# Requests

- Feedback on concept and project plan
- Formal endorsement by GSARP (Letter of Support)
- Formal endorsement by member agencies
- Ideas on funding sources

# Questions?

**202-939-3810**

**porter@eli.org**

**[http://www.eli.org/Program\\_Areas/invasive\\_species.cfm](http://www.eli.org/Program_Areas/invasive_species.cfm)**

