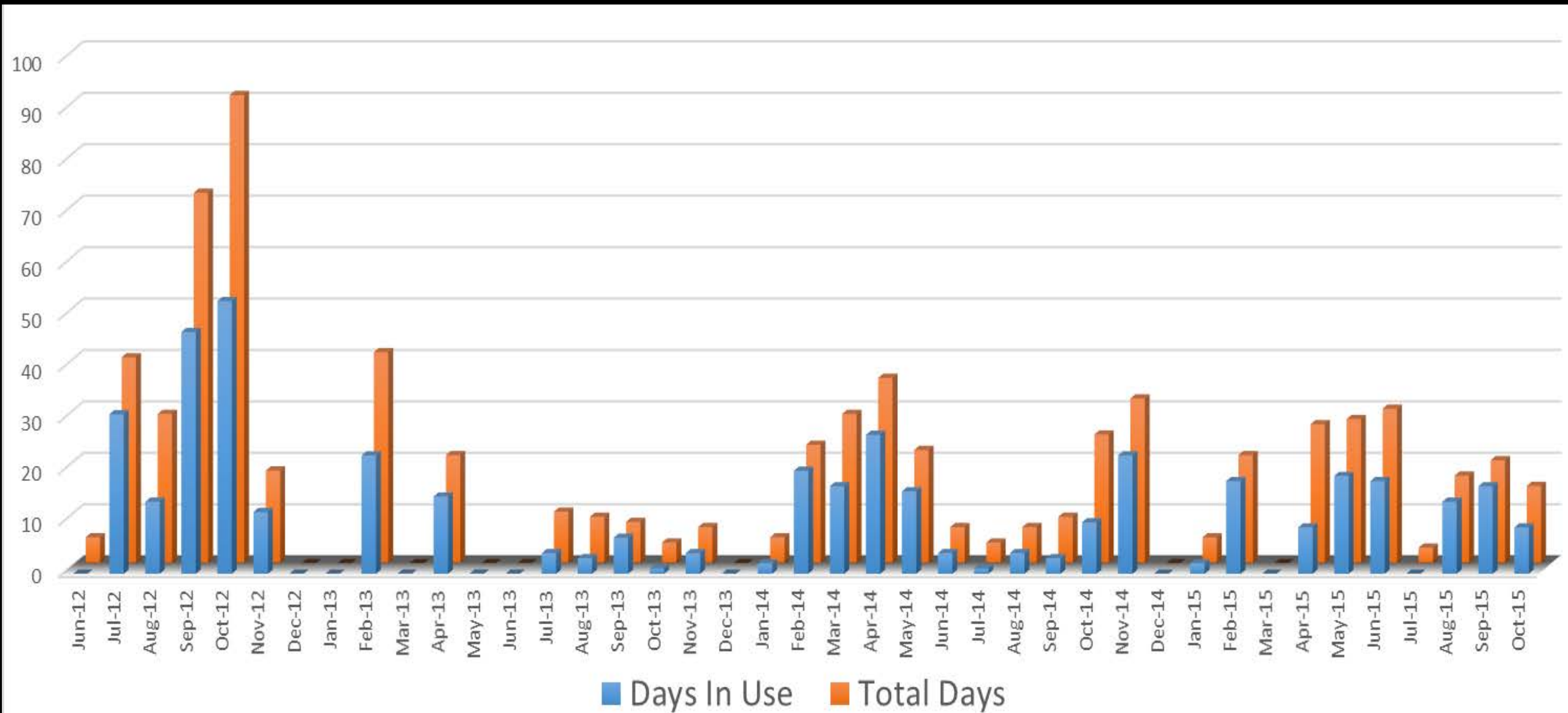




July 2012 – October 2015

Traveling Trunk Update

Trunk Utilization



Organizations Using the Trunks

- Oxbow Eco-Center / St. Lucie County
- TX Parks and Wildlife Department
- The Nature Conservancy
- GA Department of Natural Resources
- LA Department of Wildlife and Fisheries
- Harris County Carver Middle School
- T. DeWitt Taylor Middle High School
- SC Department of Natural Resources
- Sebastian River Middle School
- South Florida State College
- Argyle Elementary
- U.S. Fish and Wildlife Service
- OK Department of Wildlife Conservation
- NOAA
- FL Fish and Wildlife Conservation Commission
- USACE – Engineer R&D Center
- NPHS Science Olympiad
- MS Department of Marine Resources
- UF/IFAS-Center for Aquatic & Invasive Plants
- First Coast Invasive Species Working Group
- UF – Florida Invasive Species Partnership
- Wildlife Mississippi
- UF - School of Forest Resources & Conservation
- Florida Youth Challenge Academy
- Audubon – MS Coastal Bird Stewardship Program
- Grand Bay National Estuarine Research Reserve
- Clay County Schools
- Ocean Springs School District
- Buckeye High School

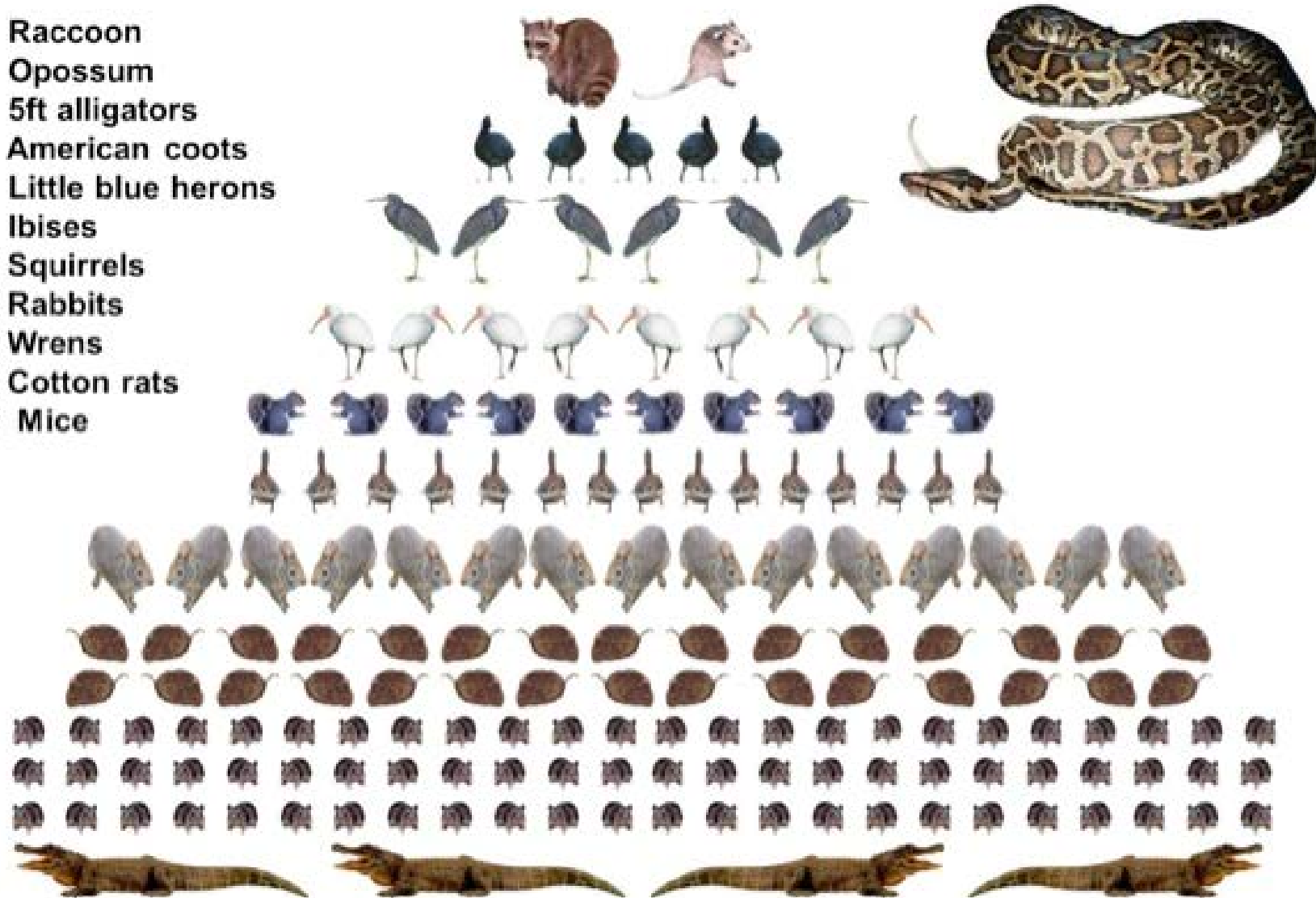
Comments

- My Students loved the kit, especially the python skin!
- Great real world learning experience!
- Thanks so much for the kit! It really brought our curriculum to life!
- The Kit was amazingly simple to use!
- The python skin really hits home with the students.

A hypothetical diet necessary for a hatchling Burmese python to reach 13 feet in the Florida Everglades (approx. 5 to 7 years)

(Source: Dr. Stephen Secor, Univ. of Alabama and Skip Snow, Everglades National Park)

- 1 Raccoon
- 1 Opossum
- 4 5ft alligators
- 5 American coots
- 6 Little blue herons
- 8 Ibises
- 10 Squirrels
- 15 Rabbits
- 15 Wrens
- 30 Cotton rats
- 72 Mice



Suggestions

- Consider including a few hands-on activities (like a game) to use in K-12 classrooms to illustrate the effects of invasives.
- Include a banner in the trunk that can be used at public events to draw attention to the display.
- Misidentification on the Chinese tallow tree (*Triadica sebifera*).