

Alabama Adopt-a-Reef Program

Alabama Department of
Conservation and Natural Resources
Marine Resources Division



Mississippi Bight Lionfish Response Unit - MBLRU

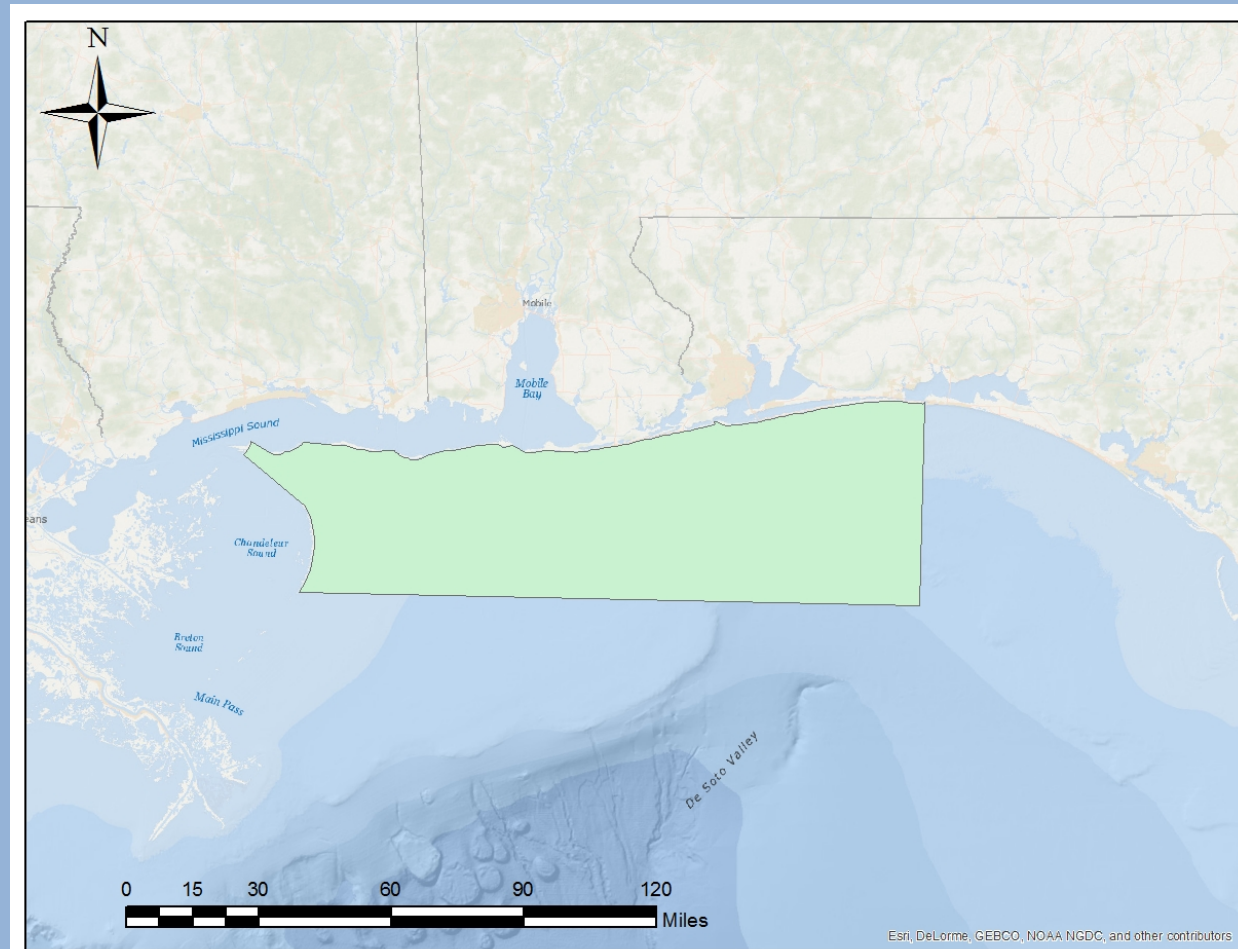
Partnership Agreement

Mississippi Department
of Marine Resources

US Fish and Wildlife

Gulf Islands National
Seashore

Alabama Marine
Resources Division



GSMFC Funding

GSMFC Subaward: MBL-750-2012-04

\$9,240

7/1/2012 – 6/30/2013

2013 surveys

GSMFC Subaward: MBL-750-2014-04

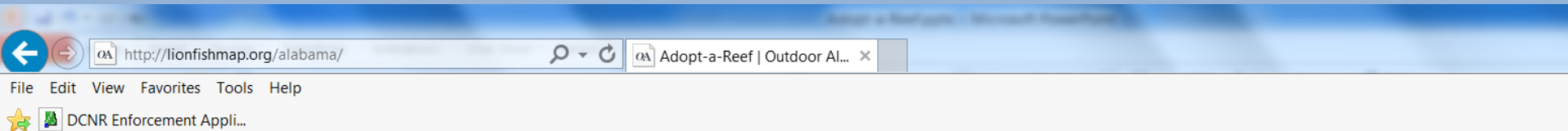
\$28,568

1/1/2014 – 6/30/2015

2014 surveys

Adopt-a-Reef Program

Adopt-a-Reef Website



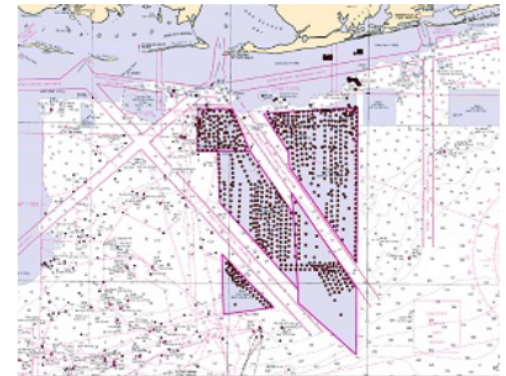
Outdoor
ALABAMA

ALABAMA DEPARTMENT OF CONSERVATION & NATURAL RESOURCES/Marine Resources Division





[Home](#) [About](#) [Contact](#) [Map](#) [Submit Reports](#)

[Login](#)

Offshore of Alabama is North America's largest complex of artificial reefs which is jointly managed by the Alabama Department of Conservation and Natural Resources / Marine Resources Division (AMRD) and U.S. Army Corps of Engineers, Mobile District. AMRD has constructed 1,192 artificial reefs from 1972 through 2014. These efforts in addition to the thousands of artificial reefs constructed by the private sector have resulted in arguably the most productive reef ecosystem in the Gulf of Mexico. To achieve the maximum amount of benefits possible from the many artificial reefs within the 1,030 square miles of reef zones offshore off Alabama, AMRD needs your help to identify, quantify, and remove items which could affect reef productivity.



Factors that could limit the utility of Alabama's artificial reef program include:

-  Deterioration of older structures
-  Invasive species (particularly lionfish)
-  Subsidence of structures into the seabed
-  Marine Litter

If you dive among these reefs, you could provide valuable information to us to help us understand how reef habitats change over time and assist us with management decisions related to this area. To learn how you can participate, [visit our 'About' page](#).

To learn more about Alabama's marine resources and fishing regulations, go to <http://www.outdooralabama.com/saltwater-fishing-alabama>

Report Submission Form

Voluntary Reef Survey Form

AMRD Account
(251) 861-2882
Reef.Survey@dcnr.alabama.gov

Dive date and time*

select

Latitude*: DD MM.mmm

North .

Longitude*: DD MM.mmm

West .

Depth

ft

Reef published by Alabama Marine Resources Division?

☒ Yes

☐ No

Reef name

Reef type

(pyramid, barge, ship, chicken coop, natural, etc.)

Reef material

(concrete, steel, rock, etc.)

Structural integrity

☒ Excellent

☐ Good

☐ Fair

☐ Poor

If structural integrity is less than "Good", describe justification of rating below

(e.g. collapsed, damaged, subsidence, toppled onto side, etc.)

Degree of debris fouling

☒ No debris

☐ Mild (e.g. small numbers of hooks with fishing line)

☐ Moderate (e.g. moderate numbers of hooks with line or an anchor line)

☐ Excessive (e.g. large numbers of hooks with line, several anchor lines or shrimp net)

If degree of debris fouling is anything other than "No debris", describe the type of debris

Was debris material removed?

☒ No

☐ Yes

If "Yes", describe debris that was removed and what debris (if any) remains on the reef

(e.g. 3 anchors were removed but approx. 50' of anchor rode remains on reef)

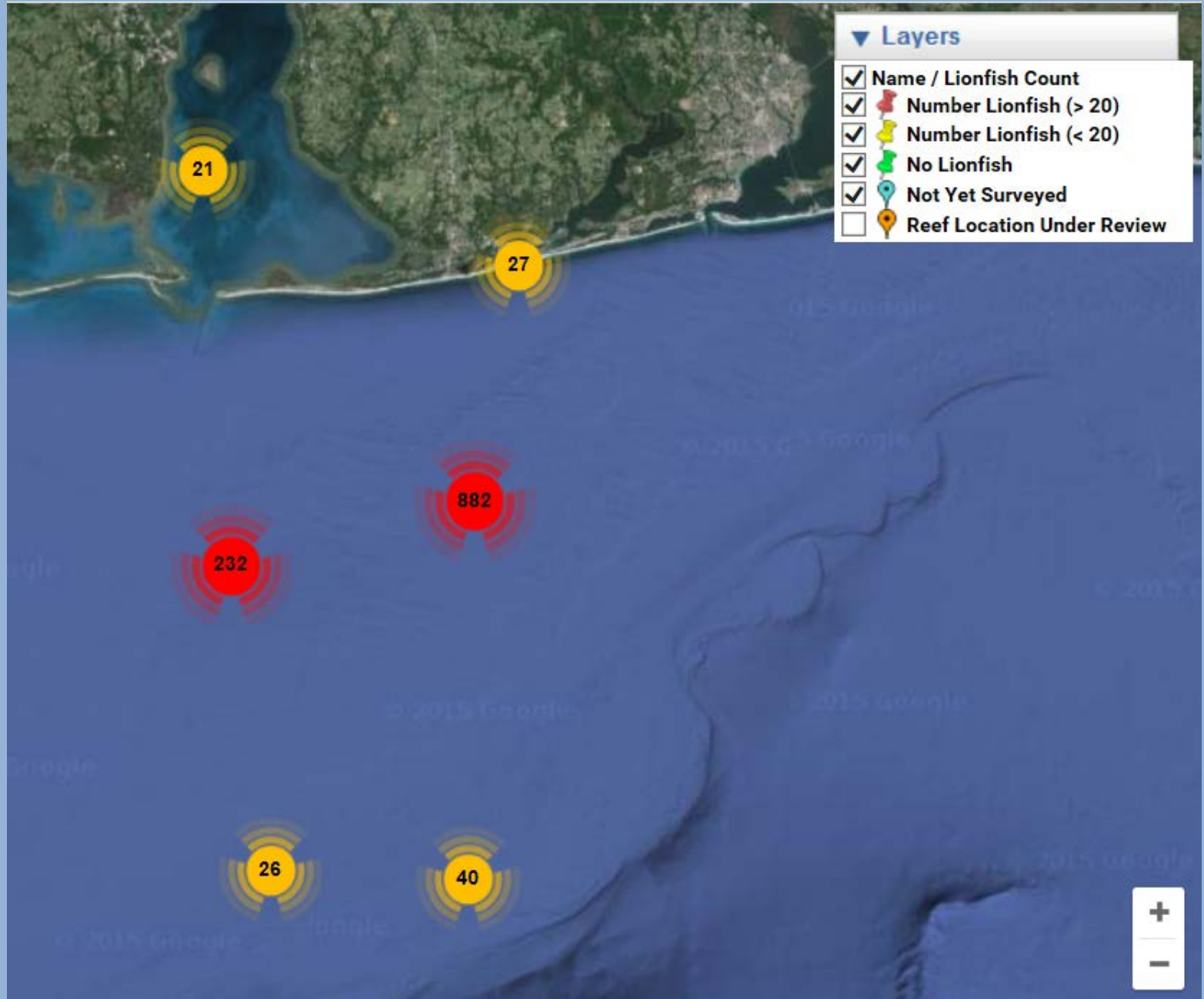
Number of lionfish observed*

Number of lionfish removed*

Percent of site covered*

Submit Report

Report Map



Report Map



Report Map

SPmid 13-10B

GPS: 29 47.021 N 87 35.223 W

Depth: 116'

Last Report: 2014-07-22 10:56:00

Lionfish: 11

Concrete & limestone pyramid 25' height and 15' triangular base. Deployed: 2013



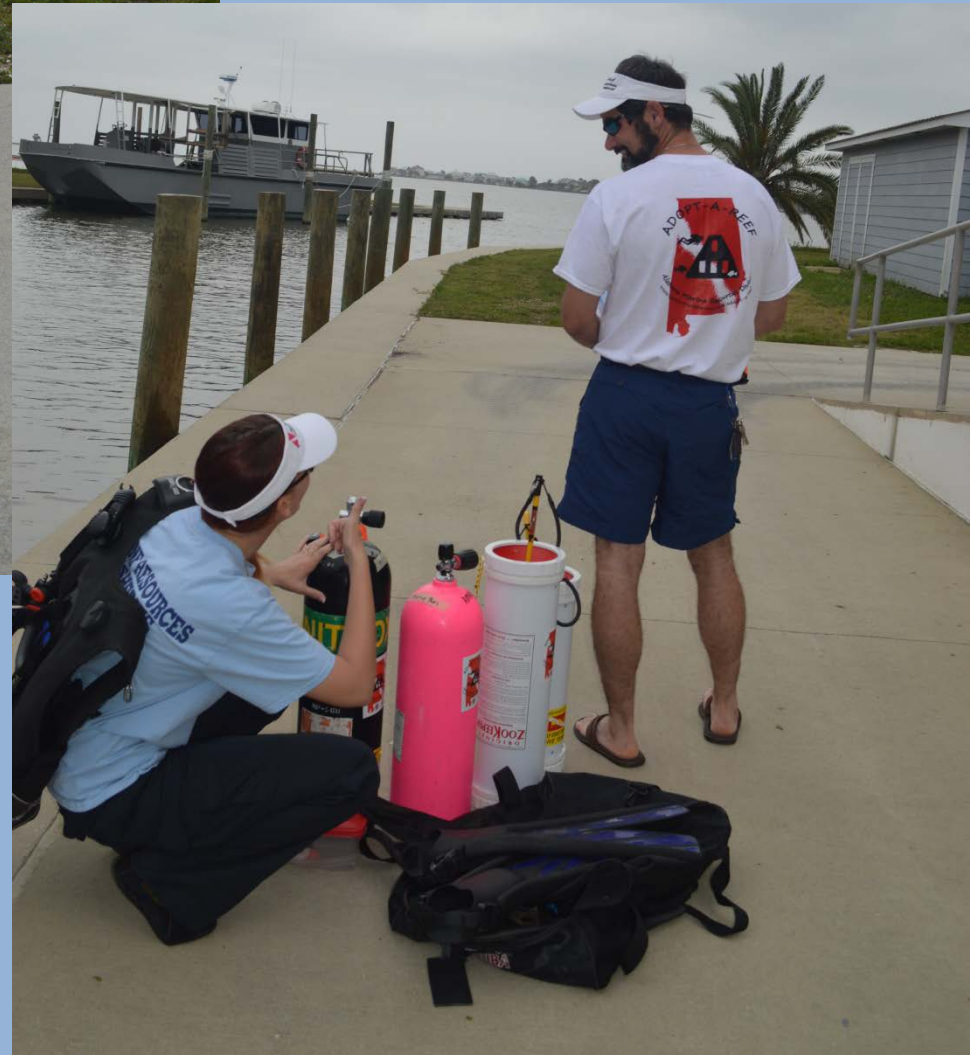
SPmid 13-10B

Layers

- ☒ Name / Lionfish Count
- ☐ Number Lionfish (> 20)
- ☒ Number Lionfish (< 20)
- ☐ No Lionfish
- ☐ Not Yet Surveyed
- ☐ Reef Location Under Review



Incentives



Outreach Events

