



ENHANCE ★ PROTECT ★ CONSERVE



Coastal Mississippi's Invasive Species Program

Mike Pursley

Invasive Species Program Manager
Office of Coastal Resources Management



Least Wanted of Coastal Mississippi

- Giant Applesnail
- Lionfish
- Feral Hogs
- Asian Tiger Shrimp
- Silver Carp
- Giant Salvinia
- Chinese Tallow
- Cogon Grass
- Hydrilla

Giant Salvinia

- Federal and State Noxious Weed
- Biomass Doubles Every 3-4 Days
- In Pascagoula River Since 2005
- Common Salvinia in Pascagoula and Pearl River



Lionfish

- First US Sighting 1985
- Moved Into Mississippi Waters About 2015
- Predatory w/ Few Natural Enemies
- Eggs drift with currents
- Found at depths of 980 feet
- Full control not considered feasible



Photo Credit: Neils Lindquist

Asian Tiger Shrimp



- Eats Native Shrimp and Shellfish
- Possibility of Disease Introduction
- First MS Sighting in 2009
- Appear To Be Reproducing in Gulf
- Founds at Depths of 300 Feet
- Sightings Not Often Reported

Future Threat - Hydrilla

- Aquarium Plant From Asia
- Millions Spent On “Maintenance Control” in FL
- Cold and Salinity Tolerant
- Infestations Nearby



Future Threat – Silver Carp



- One Caught in Hancock Co – 2014
- Recent sighting
- Grow to 60 lbs.
- Outcompetes Native Fish For Plankton
- Tend to Jump When Disturbed

Former Future Threat - Giant Applesnail

- Discovered in Robinson Bayou 2014
- Destroys Vegetation
- Extremely High Reproductive Rate
- Since 2014 – 11,945 egg masses destroyed, 450 live snails captured
- Recent flooding events may have spread infestation



Meetings in Louisiana, Miss

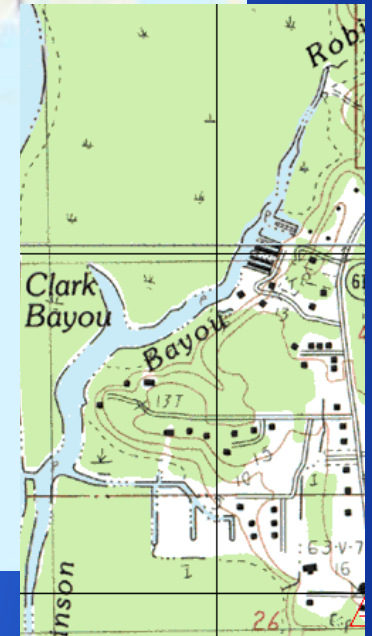


Photo Credit: USGS – NAS Database

Giant Applesnail Overview:



- Freshwater South American snail
- AKA Golden Applesnail or Island Applesnail
- Sometimes sold as “Mystery Snails”
- Largest snail (grows to 6”)
- Can breathe in water and in air
- Eats a broad range of vegetation
- Females typically larger than males
- Tolerant of salinity up to 7 ppt
- Survives in water 35 to 100 degrees F

Perfect Invaders

- Snails mature in 60 to 80 days
- 2,500 eggs/mass average
- Egg masses produced every two weeks
- Eggs hatch in 10 to 14 days
- Spreads naturally and transported by other species



Environmental and Economic Damage:

- Strips marshes of vegetation
- Changes plant community to algal-based
- Accumulation of algal biotoxins
- Carrier of rat lungworm parasite
- Millions of dollars of damage to rice crops in Asia
- Louisiana farmer lost 220 acres of crawfish production
- Limited control options



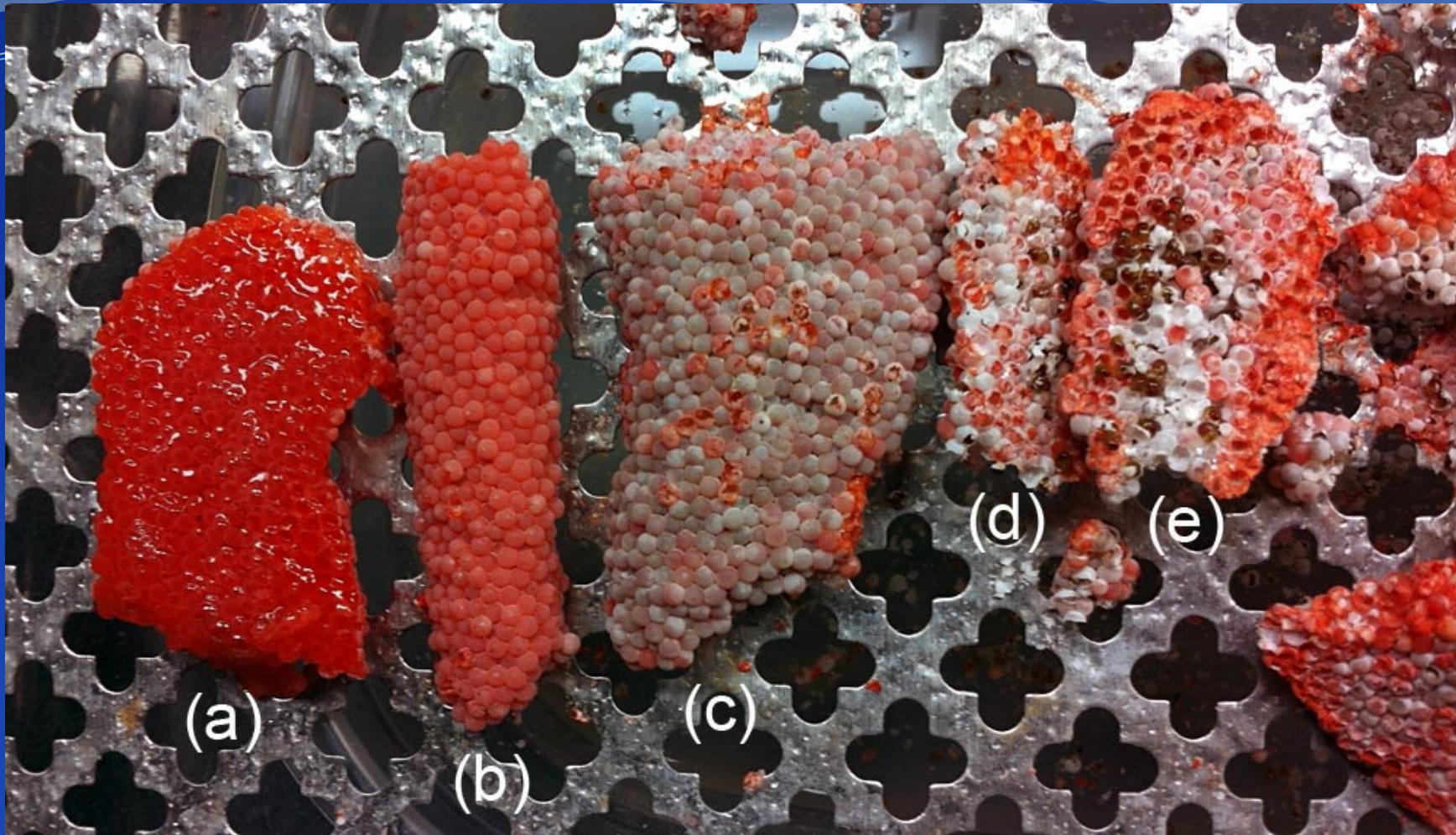
Louisiana Sportsman



Snailbusters.com



Will lay eggs
on just about
any vertical
surface
above the
waterline.



©Amy E. Miller-2013

Eggs start out bright pink then fade as the shell forms

ENHANCE ★ PROTECT ★ CONSERVE

History of Applesnail Invasions

1980's – Imported into Japan, Philippines, Korea, Singapore Thailand, Vietnam and Malaysia for aquaculture

Year of First Report	State	Total # NAS Reports to Date
1989	Florida	539
2000	Texas	33
2003	Alabama	2
2005	Georgia	69
2006	Louisiana	36
2008	Mississippi	5
2008	South Carolina	32
2008	Arizona	1

Response Efforts

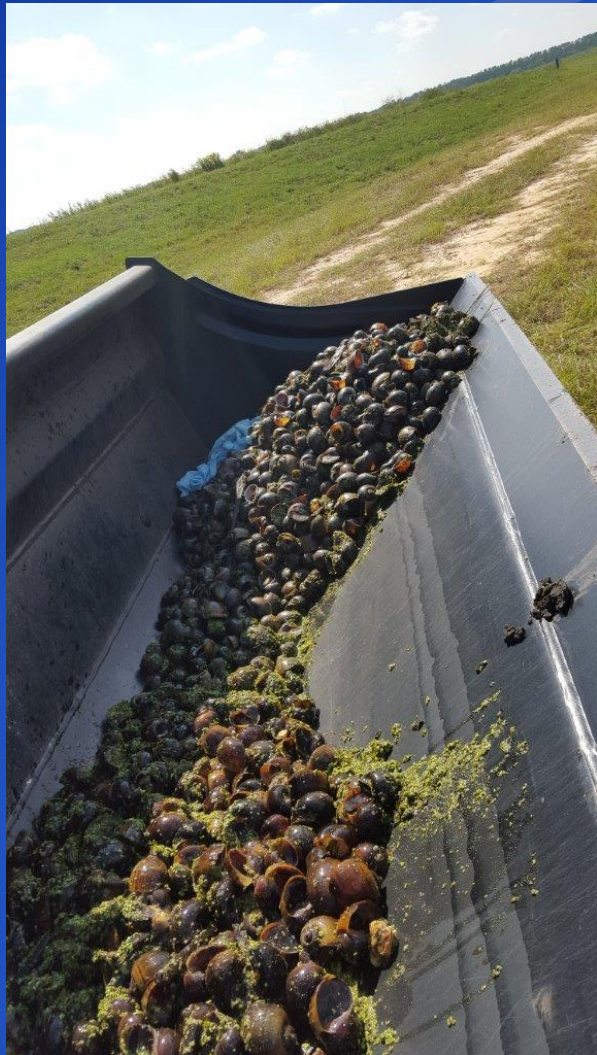
2001 – MDAC BPI adopted an emergency applesnail regulation. Movement of live applesnails into and within the state is prohibited.

2006 – USDA banned importation and interstate transport of most applesnails

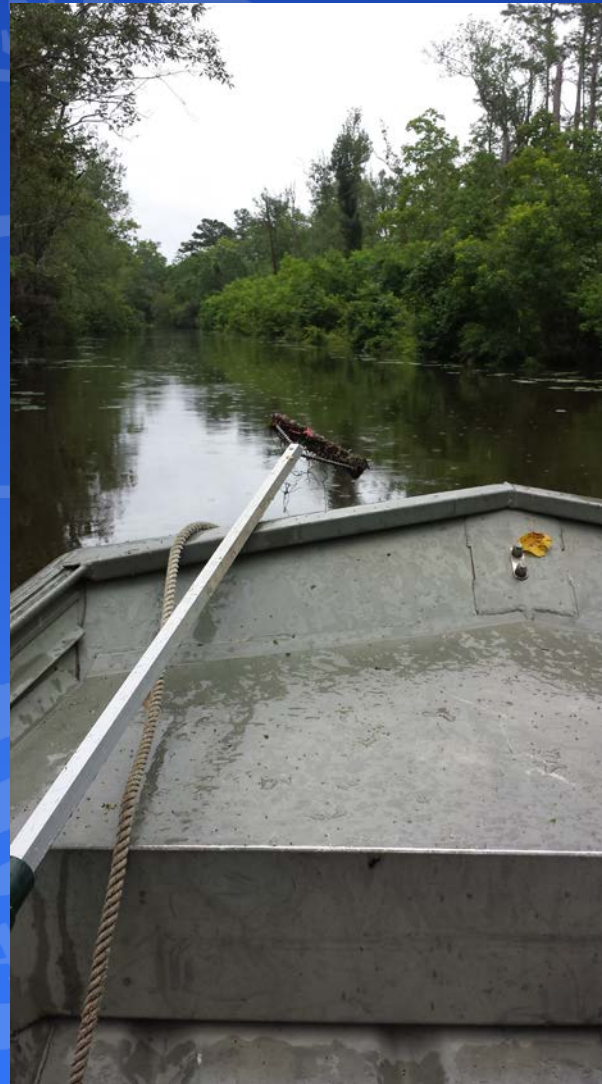
Currently – Young, immature snails sold in the aquarium trade are difficult or impossible accurately identify.

Control Efforts in Coastal Mississippi

Trapping/
Capture



Elimination
of Egg
Masses



ENHANCE ★ PROTECT ★ CONSERVE

Mechanical Control of Egg Masses



ENHANCE ★ PROTECT ★ CONSERVE

Approximate Cost of Weekly Giant Applesnail Control Missions - Robinson Bayou

Item	Amount
Labor (12 man hours / mission)	\$576
Truck (60 miles @ Federal rate)	\$32
Boat (25 hp outboard)	\$16
Total	\$624

Yearly Cost of Giant Applesnail Control in Robinson Bayou

Year	No. of Missions	No. of Egg Masses	No. of Snails	Yearly Cost
2014	9	322	0	\$5,616
2015	19	339	7	\$11,856
2016	35	3,643	182	\$21,840
2017	39	7,438	243	\$24,336
Total	102	11,742	432	\$63,648

2018 – Help from Gulf Corps



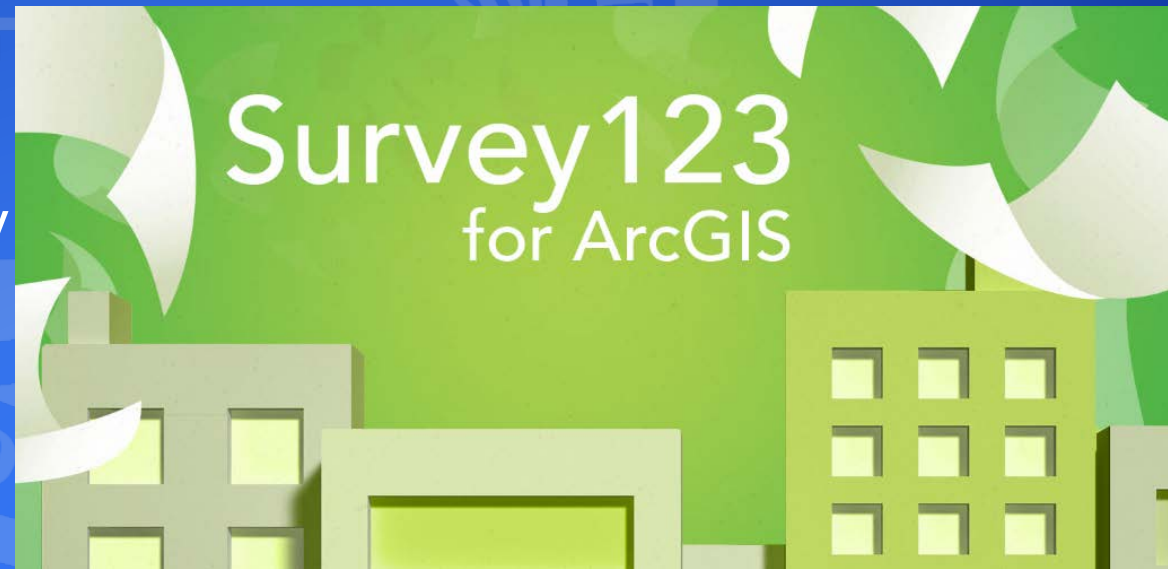
ENHANCE ★ PROTECT ★ CONSERVE



ENHANCE ★ PROTECT ★ CONSERVE

Field Data Collection:

- Free downloadable app for users
- Easily configurable for any type of project
- Can set work area assignments
- Real-time monitoring of activity
- Remote uploading of data
- Data can be downloaded in a variety of formats



Applesnail Log

Team *

Please select your team

MDMR Staff

☐ Team 2

☐ Team 3

☐ Team 4

☒ MDMR Staff

Number of egg masses destroyed *

0

Number of live snails collected *

Applesnail Log

Number of live snails collected *

0

Number of dead snails/empty shells *

0

Number of egg masses not destroyed *

0

Number of live snails sighted but not destroyed

Applesnail Log

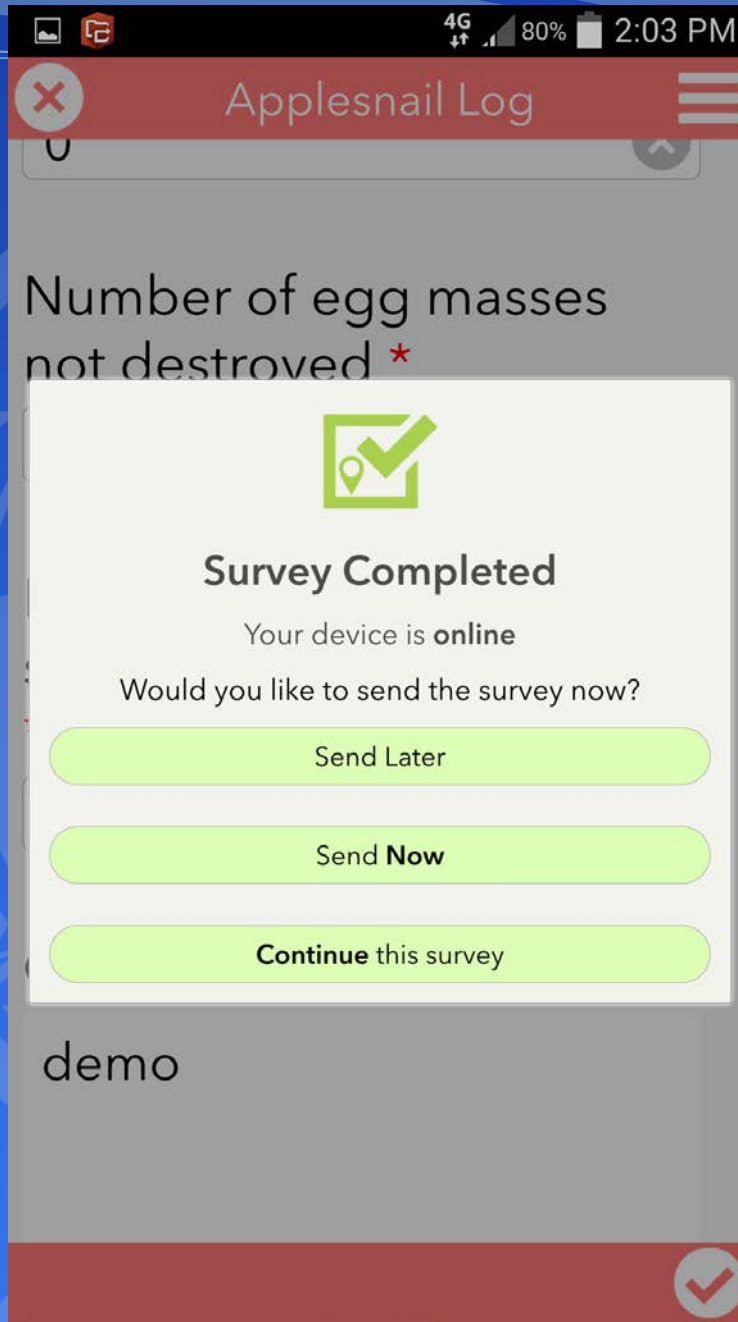
Number of live snails sighted but not destroyed *

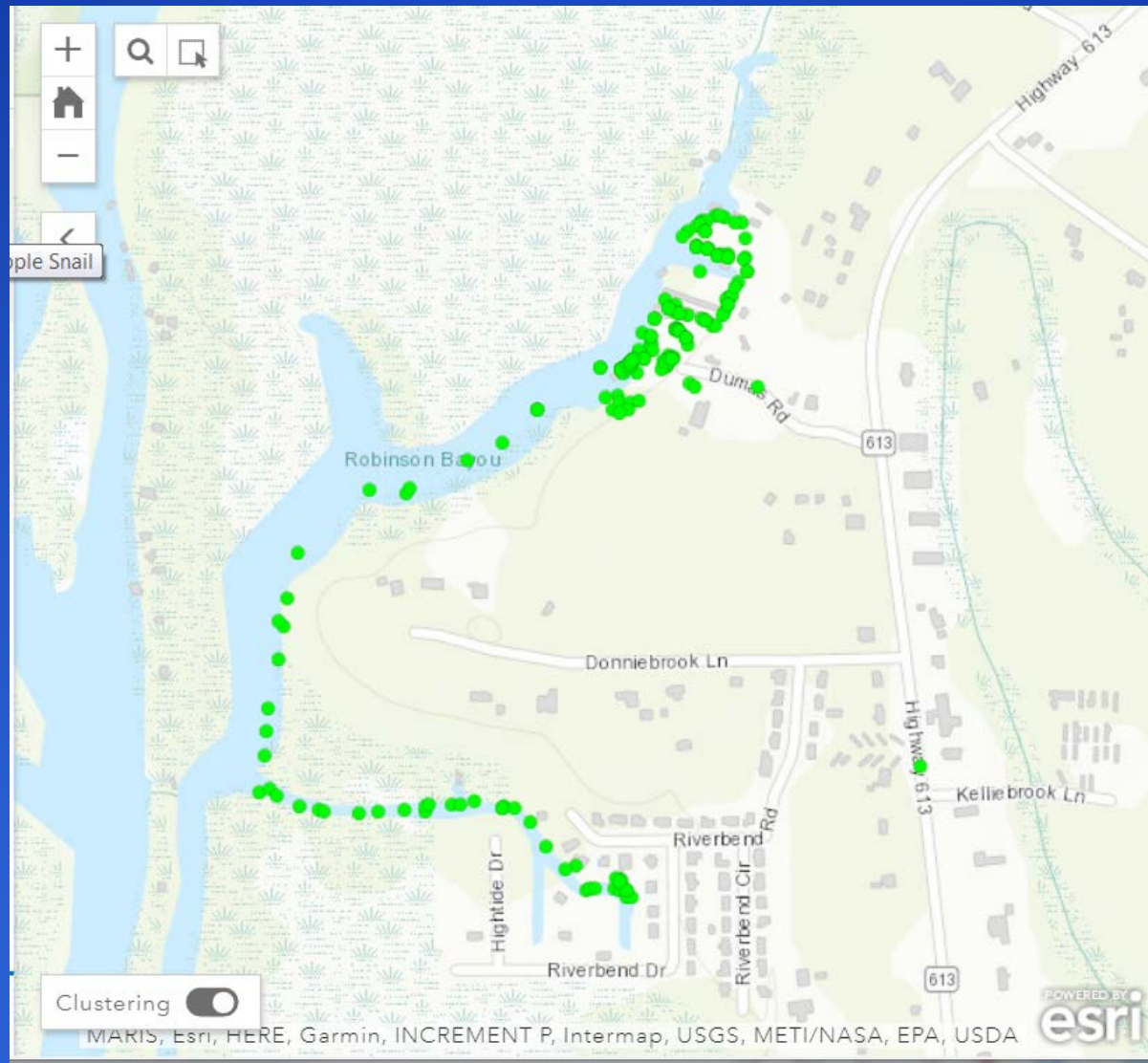
0

Comments

demo

Add a photo





ENHANCE ★ PROTECT ★ CONSERVE

Applesnail Log

Details

Add

Basemap

Analysis

Save

Share

Measure

Bookmarks

Find address or place

Contents

survey123
b831b8cd77754eeeba8e415fbf3fb794
stakeholder - surveyPoint

Topographic

+

Home

-

Refresh

0

300

600ft

surveyPoint

Team	Team 1
Number of egg masses destroyed	1.00
Number of live snails collected	1.00
Number of dead snails/ empty shells	1.00
Number of egg masses not destroyed	1.00
Number of live snails sighted but not destroyed	1.00
Comments	Test
Attachments: No attachments found	
Zoom to Get Directions	

Robinson Bayou

Donniebrook Ln

Highway 613

Kellebrook Ln

Riverbend Dr

Allen Lance Rd

Manchester Rd

Matthews Rd

POWERED BY
esri

MARIS, Esri, HERE, Garmin, INCREMENT P, Intermap, USGS, METI/NASA, EPA, U...

ENHANCE ★ PROTECT ★ CONSERVE

Questions?



By Tom Corser www.tomcorser.com, CC BY-SA 2.0 uk,
<https://commons.wikimedia.org/w/index.php?curid=425842>

ENHANCE ★ PROTECT ★ CONSERVE