

# Changes to Lacey Act Injurious Species Interpretation

State Gaps, Potential Next steps



**Kristen Penney Sommers**  
**Florida Fish and Wildlife Conservation**  
**Commission**

# Regulatory Terms

- USFWS regulatory category:  
Injurious species
- State Regulatory Categories
  - Ex: FWC regulatory categories:
    - Reptiles of Concern
    - Conditional species
    - Prohibited species
    - Captive Wildlife I, II, III
- **These lists do not always match up.**



# USFWS Injurious Wildlife

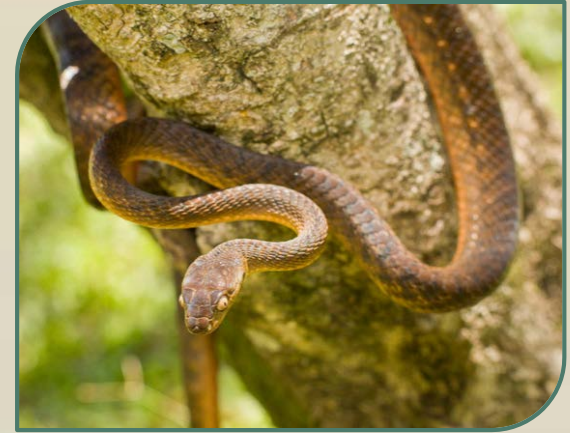
- Lacey Act established in 1900, with amendments
- Prohibits importation into the U.S.
- Until 2017, interstate transport in continental U.S. was prohibited





# Implications of Recent Court Ruling

- April 2017 court ruling on the Lacey Act removed the interstate transport provision
- Species that may pose a risk to each state, but are not currently regulated at the state level, may now enter from other states



# Impacts of Injurious Species

- Direct predation
- Competition
- Disease risks
- Human health and safety concerns
- Social and economic impacts
- Secondary impacts (e.g. impacts to keystone species have far-reaching effects)



# Injurious Species Incidents In Florida

Common Name	Confirmed Incidents
Bighead carp	4
Burmese Python	Over 5,000
Bullseye Snake Head	1,293
European Rabbit	4
Green Anaconda	7
Java Sparrow	80
Mongoose	5
Northern African Python	48
Red-whiskered Bul-bul	263
Reticulated Python	11
Brown Trout (family Salmonidae)	1
Walking Catfish	396
Yellow Anaconda	5



# Gulf and Atlantic State Gaps in Regulations

- Which species are listed on the Federal List but not your states list?
- What do you know about potential threats from nearby states?



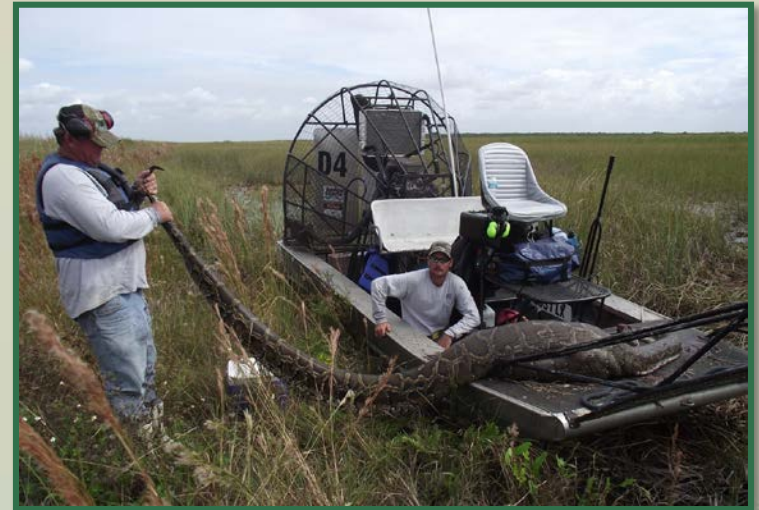
*Bullseye snakehead*





# Considerations

- Do nearby states regulate or allow those species?
- Have they been reported in nearby states?
- What is the “risk” in your state?
- Stakeholder Interests
  - Aquaculture
  - Pet Industry
  - Zoos/Aquariums
  - Pet Owners/Hobbyists





# State Options



- Case by Case -Risk Assessments for those Injurious Species not regulated in your state
- One size fits all regulation in your state- place current injurious species into one of your states regulatory categories.
- Incorporating or referencing Injurious Wildlife into state regulations
- Combination of approaches



# Discussion



Slide left intentionally blank.

