



Louisiana Aquatic Invasive Species Program 2022 Fall GSARP Meeting

Robert P. Bourgeois | Aquatic Invasive Species Coordinator

Invasive species in LA



Apple Snails



Aquarium releases



Invasive carp



Tiger Shrimp



Apple Snails in LA



Tiger Shrimp in LA



Rio Grande Cichlid in LA



Asian Swamp Eel in LA



Aquarium Releases in LA



Aquarium Releases in LA



Aquarium Releases in LA

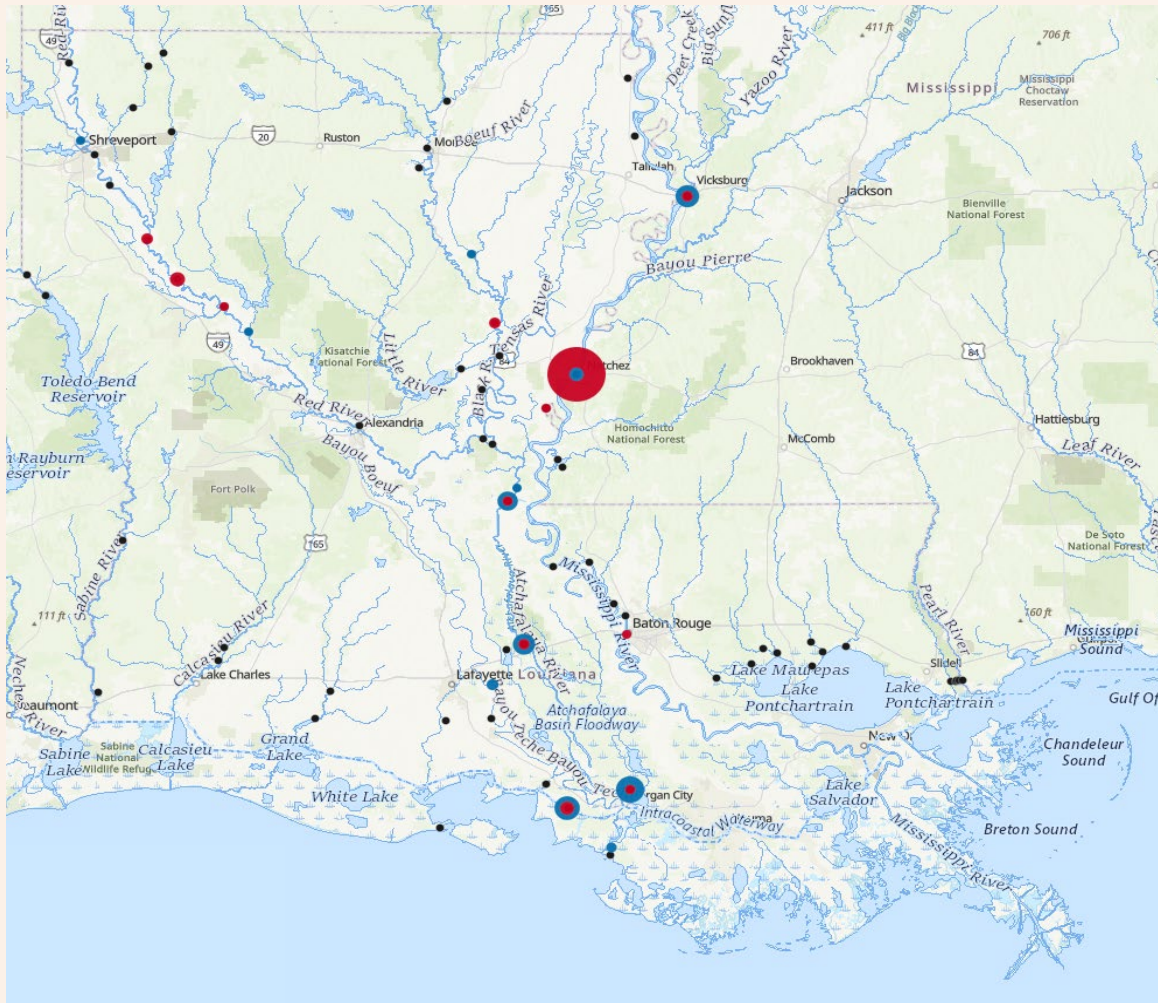


Invasive Carps of Louisiana

Family Xenocyprididae

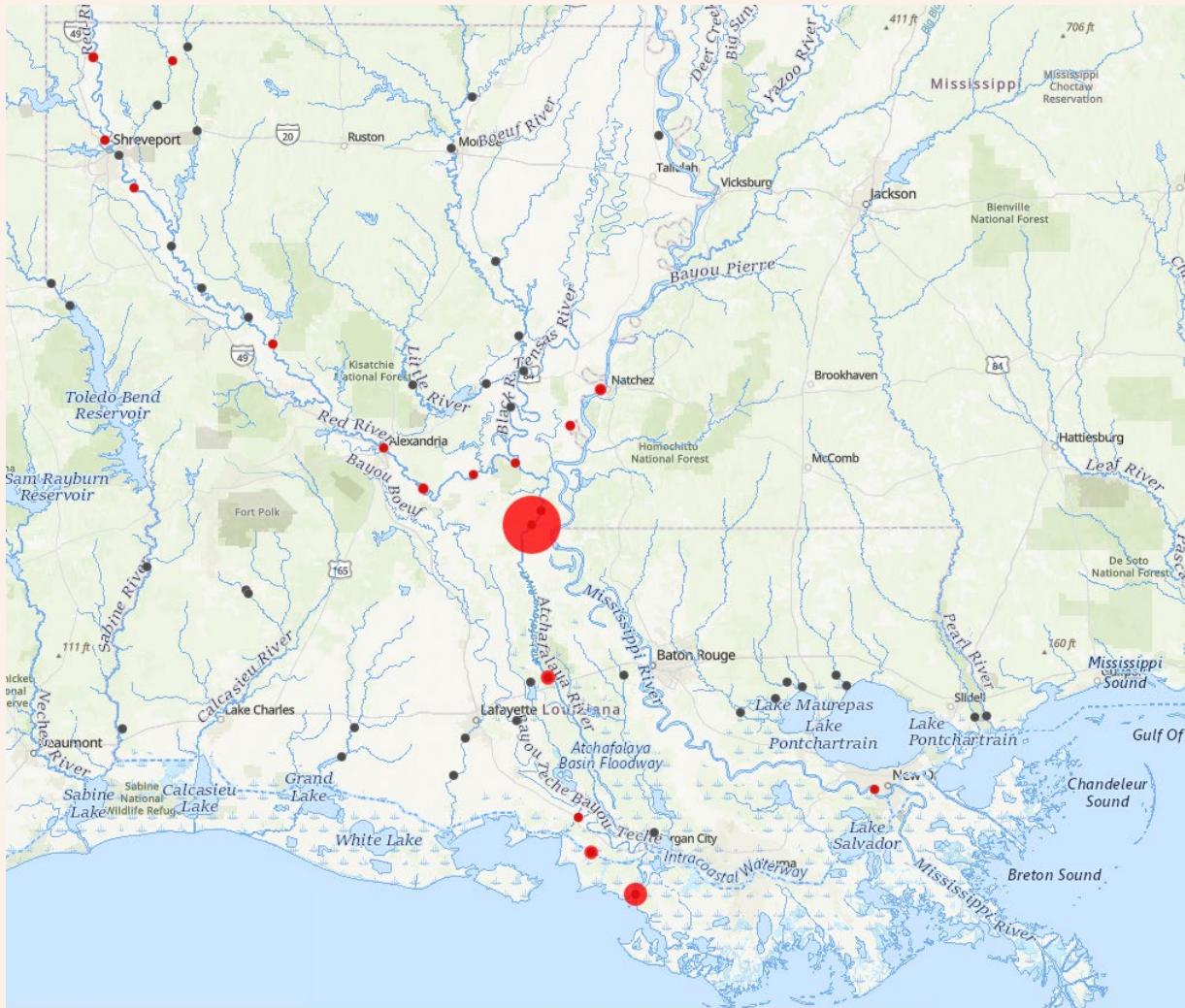


Past Projects – 2013 and 2014 Larval Tows



Red (2013) and Blue (2014) sites had invasive carp present
Black sites indicate invasive carp not present

Past Projects – 2019 Larval Tows



Red sites had invasive carp present
Black sites indicate invasive carp not present

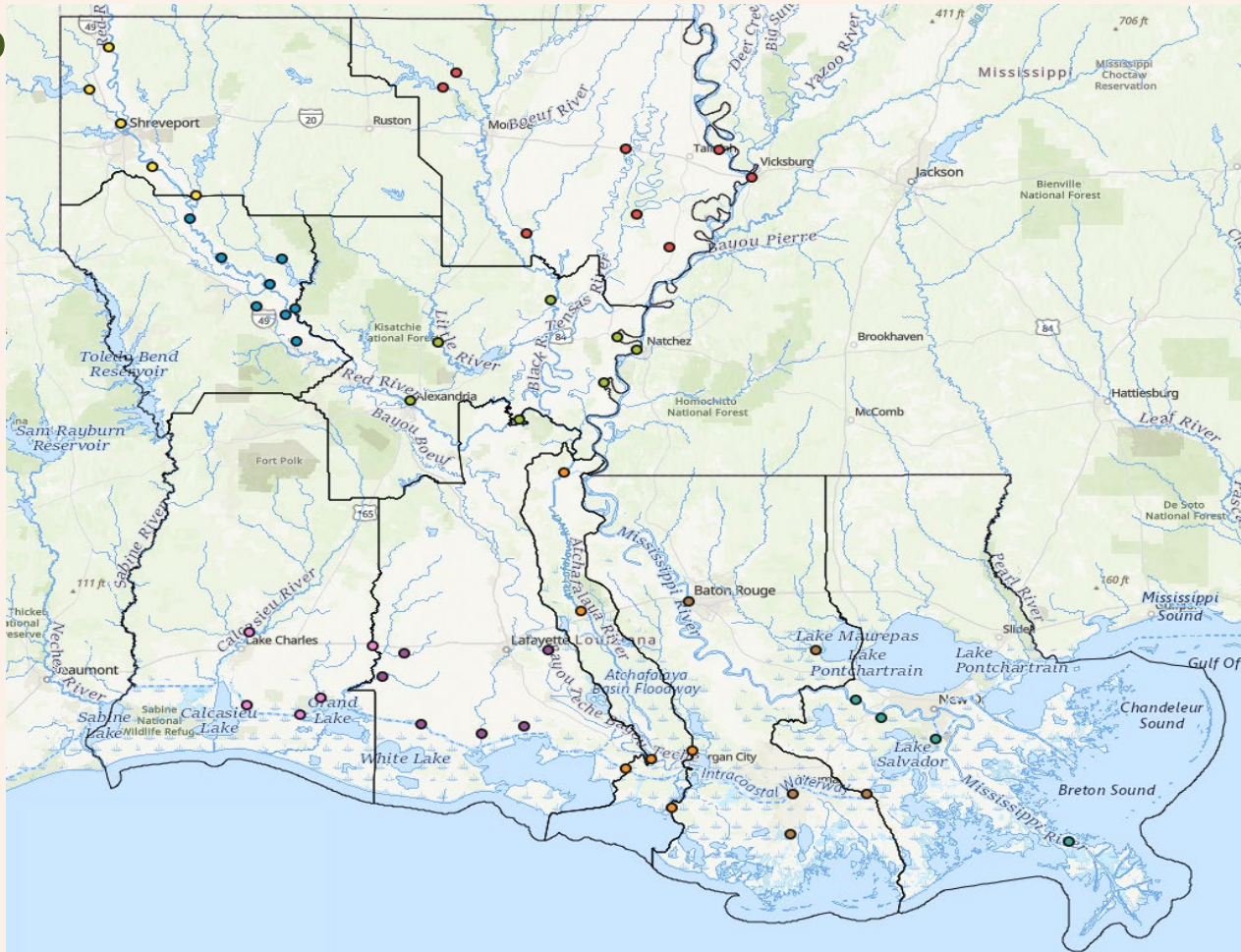
2020 Invasive Carp Partnership

- \$25 million annually - Invasive carp research and control in Mississippi River Basin
- LA part of LMR and ARW sub-basins
 - ~\$1 million annually in each sub-basin, cooperative/competitive grants
 - Encouraged to partner with other states and organizations



Current Ongoing Underway – Larval Tows

- Partnering with Dr. Quenton Fontenot at Nicholls State University
- Mix of new and old stations with focus south of ICWW
- Sp



Current Ongoing Projects - Telemetry

- Partnering with Dr. Mike Dance at LSU
- Movement between basins and in coastal LA
- 40 receivers, 200 tags, 2020 and 2021



Funded Projects (started Jan 2022)

- Carp used as fertilizer for coastal restoration plants (NSU)
- Carp used as catfish feed (LUMCON)
- Survey of commercial fishermen and wholesalers to further understand the obstacles to increased harvest (LDWF)
- Impacts of carp on native fish condition and abundance (LSU)



Funded Projects (start Jan 2023)

- Carp used as Rainbow Trout feed (LUMCON)
- Impacts of carp on native fish condition and abundance (LSU)
- Impacts to the lower trophic levels of the food web in Atchafalaya River Basin (ULL)
- Seasonality of reproduction in Atchafalaya River Basin (NSU)
- Telemetry In the Atchafalaya River Basin (LSU)
- Testing of gear to aid removal of invasive carp by commercial fisherman(LDWF)



Future Areas of Interest

- Telemetry in the Red River
- Direct impacts to native fish using mesocosms
- Development of alternative uses for carp
- Increase commercial harvest
- Age and growth of the invasive carp in LA
- Population assessment of invasive carp



Rob Bourgeois
rbourgeois@wlf.la.gov

