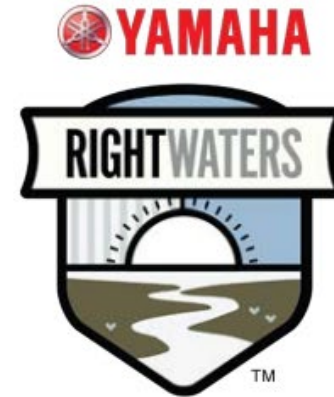


Identifying Risks and Prescribing Access Enhancements

Zach Burnside, *Invasive Species Program Manager*

Wildlife Forever





The cover of the 'Access Enhancement Guidebook' features a landscape photograph of a river or lake under a cloudy sky. A green horizontal band across the middle contains the title and subtitle. The bottom half of the cover shows an aerial view of a paved boat launch area surrounded by dense green trees.

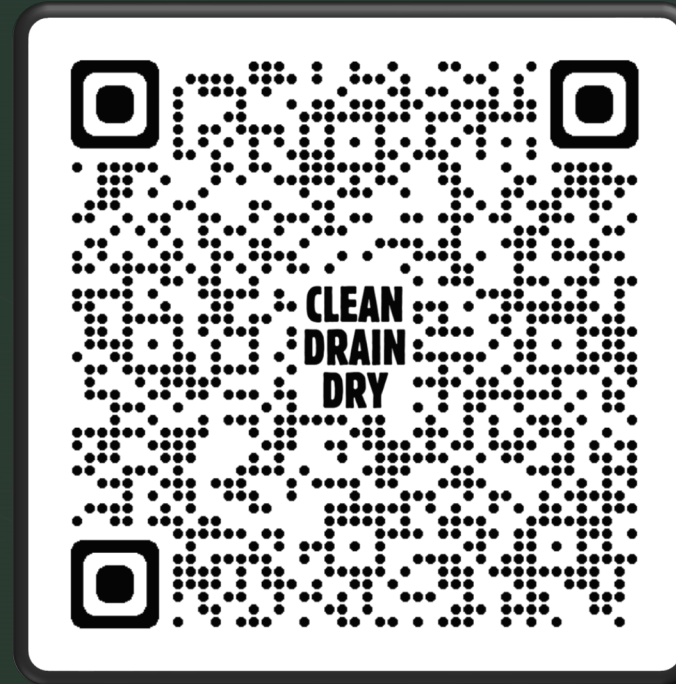
Access Enhancement Guidebook

Preventing AIS Through Modernized AIS Infrastructure

A Comprehensive Guide to Invasive Species Prevention at Public Water Access Sites



A systematic redesign or retrofit process to improve a public water access site, with a focus on aquatic invasive species prevention



- **Assess**
 - Determine your goals and site selection methods
- **Coordinate**
 - Identify partners and administrators of the site
- **Communicate**
 - Empower public use
- **Evaluate**
 - Visit the site and survey the needs
- **Supply**
 - Equip the access with AIS prevention tools
- **Standardize**
 - Adopt consistent AIS prevention strategies



PART 3 Case Study

Black Bayou National Wildlife Refuge: Monroe, LA — Access Enhancement



Existing Site Features

- A** Reserved Parking Spaces
- B** Trailered boat launch (50 hp max)
- C** Canoe/kayak launch
- D** Walking pier parking lot

Recommendations

- 1** Install watercraft cleaning station near exit to promote outbound use without impeding inbound traffic.
- 2** Install stencil
- 3** Install enhanced signage with cohesive messaging



Current signage at the Refuge's public water access



Recommended signage enhancement to provide cohesive and centralized messaging

Aquatic Invasive Species Watercraft Access Analysis

Pilot: Risk Assessments + Site Prescriptions

Bureau of Land Management Project Report: L22AS00240

Report prepared by: Zach Burnside, Invasive Species Program Coordinator, Wildlife Forever



A tool designed to identify vectors of invasive species spread while recommending mitigation strategies to reduce threats.





Access Enhancement Evaluation



Site Name: Loma Boat Launch
 Date: 3/10/23
 Staff: Maddie Baker, Ivan Archer
 Access Coordinates:
 Ownership: Colorado Parks and Wildlife
 Aerial Photographs taken? ☐

Access Site	Response	Notes
Road Surface	Dirt road	Condition?: <u>poor</u> fair good excellent (circle)
Ramp Surface	Dirt/sand	Photos taken? <input checked="" type="checkbox"/> surface can become muddy
Weedy Access?	(Y/N)	
Traffic Markings	(Y/N)	
Does the area experience seasonal flooding?	(Y/N)	When? Jan Feb Mar Apr May <u>Jun</u> Jul Aug Sept Oct Nov Dec Full or <u>Partial</u> ? <u>Water rises early May - early July</u>
# of Parking Stalls		0 marked - 3 usable spots in a dirt lot
Primary User types	Motorized Non-motorized Shoreline anglers Hunters Other	Hunters, anglers, rafters and paddleboarders frequent the area year round
Secondary User Types	Motorized Non-motorized Shoreline anglers Hunters Other	
Busiest times of year		When? Jan Feb Mar Apr <u>May</u> Jun Jul Aug Sept Oct Nov Dec (circle) <u>Peak capacity 50+ craft/day</u>
Inspector present?	NO	When? Jan Feb Mar Apr May Jun Jul Aug Sept Oct Nov Dec (circle) N/A

Decontamination station present or available in area	(Y/N)	
Facilities & Accessibility	Response	Notes
Visitor Center	(Y/N)	Open year-round?
Trash cans	(Y/N)	Recycling? N/A State wildlife areas typically don't offer trash disposal
Restroom	(Y/N)	1 restroom
Cell Phone Service	(Y/N)	
Electricity Available	(Y/N)	Lighting?: NA
Tree Coverage?	(Y/N)	(Full, Some, Little, None) Little
Prone to Vandalism	(Y/N)	Signage damage known to area
ADA Compliant	(Y/N)	
Colorblind Compliant	(Y/N)	
User Demographics	(Y/N)	Primary age range: <u>28-25</u> <u>25-35</u> <u>45-55</u> <u>55+</u> Primary Ethnicity: <u>Variable</u> Heavy use by many demographics
AIS Prevention	Response	Notes
Infested AIS	alligatorweed chinese tallow tree giant salvinia common salvinia hydrilla water hyacinth other	New Zealand mudsnails detected upstream in the Colorado River
Watch List AIS	alligatorweed chinese tallow tree giant salvinia common salvinia hydrilla water hyacinth other	

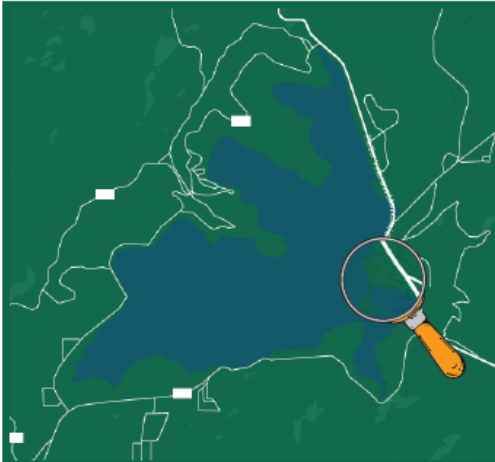
Grassy Point Picnic Area

Georgetown Lake

Anaconda, MT

46° 10' 58.35" N, 113° 16' 1.59" W

Georgetown Lake is a heavily trafficked water body with six developed accesses. The lake faces a current infestation of Faucet Snail and nearby threats of Curly-leaf pondweed, New Zealand mud snail, and Parrotfeather. The access is located in a particularly weedy area and is the largest access on the lake.

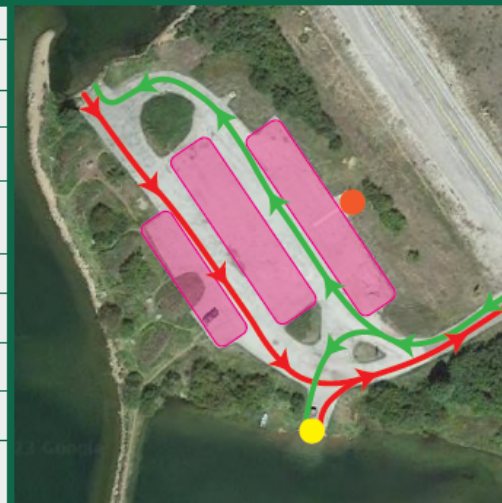


Access Ownership: USFS
Other stakeholders: N/A
Access Manager: Patrick Saffel
 Region 2 Fish Manager
 psaffel@mt.gov
 406-542-5507
Administrators: Paul Hooper
 Fish Biologist
 paul.hooper@usda.gov



KEY
 ● = boat ramp
 ● = signage (N/A)
 ● = trash receptacles
 ● = parking
 ← = inbound route
 → = outbound route

	Access Checklist
Lot/ramp condition	<ul style="list-style-type: none"> asphalt ramp, concrete ramp good condition
Parking	<ul style="list-style-type: none"> 38 spaces
Existing Infrastructure	<ul style="list-style-type: none"> Trash Restroom NO AIS tools NO AIS signage
User demographics & activities	<ul style="list-style-type: none"> Motorized/non-motorized boats, shoreline anglers, tourist sightseers 45-55 white
Busy season	<ul style="list-style-type: none"> May thru Sept
Inspector/Decon?	<ul style="list-style-type: none"> None at access or surrounding areas
Flood prone?	<ul style="list-style-type: none"> No
Cell service/electricity?	<ul style="list-style-type: none"> Cell service, no electricity
Infested	<ul style="list-style-type: none"> Faucet snail present Threat of Curly-leaf pondweed, New Zealand mud snail, Parrotfeather found locally



Georgetown Lake is classified as: HIGH RISK

Due to

- Lack of prevention tools & signage
- Threat of outbound spread of Faucet snail, inbound spread of Curly-leaf pondweed, New Zealand mud snail, Parrotfeather



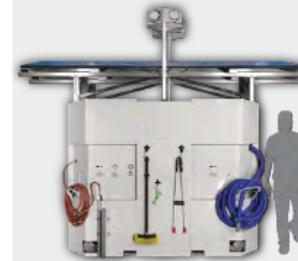
Grassy Point Picnic Area

Georgetown Lake

Anaconda, MT

KEY

● = boat ramp
 ● = tools/equipment
 ● = signage
 ● = parking
 ← = inbound route
 → = outbound route



Access Recommendations:

Watercraft cleaning equipment: Inbound/Outbound

- Solar powered Wayside cleaning station: CD3 systems
 - Clean Drain Dry wrap
 - Stop Invasive Species wrap
 - Everyone Likes a Clean Boat wrap
- Landing Station cleaning system: MAJK Solutions
 - Clean Drain Dry (Angler) sign



Signage: Inbound/Outbound

- Install Clean Drain Dry & educational signage at boat ramp entry
 - Risk Species: **Faucet snail, Curly-leaf pondweed, New Zealand mud snail, and Parrotfeather**
- Signage near watercraft cleaning equipment
- Clean Drain Dry stenciled pavement markings on concrete boat ramp

Community Outreach, Prevention, & Awareness Recommendations:

Distribute Clean Drain Dry outreach materials

- Brushes, boat towels, brochures, decals, other Clean Drain Dry branded products are available at CleanDrainDry.org
- Use watercraft inspectors or volunteer outreach at local events, fairs, bait shops, visitor centers, and retailers to educate the community and distribute outreach materials.

Media & Marketing

- Deploy Clean Drain Dry outreach campaign
 - Streaming ads, outdoor billboards, gas stations, social, radio, print ads
 - Targeted social media: Facebook and Instagram ads
 - Geofenced digital web and mobile device ads
 - Target users who have visited certain areas. Setting up digital fences around this access and others around it allow us to target users continually.



Whitewater Lake Public Water Access Site

Whitewater Lake | 47°30'17.8"N, 92°10'17.9"W

Hoyt Lakes, MN



Access Ownership: City of Hoyt Lakes

Access Manager: Unknown

KEY
 ● = boat ramp ● = signage
 ● = trash receptacles ○ = parking
 ← = inbound route → = outbound route

Access Checklist

of parking spaces (trailer) 6 (18)

Cleaning tools present None

of signs (AIS related) 11 (3)

Current infestations

☐ D ☐ RS ☐ BMS ☐ QM ☐ CLPW ☒ NLC
☐ H ☐ R ☒ CMS ☒ RC ☐ CR ☐ PL
☐ VHS ☐ TG ☐ FS ☐ SWF ☐ EWM ☒ RCG
☐ RG ☐ AC ☐ NZMS ☐ ZM ☐ HC

Occurrences within 20 miles

☐ D ☐ RS ☐ BMS ☐ QM ☒ CLPW ☒ NLC
☐ H ☐ R ☒ CMS ☒ RC ☐ CR ☐ PL
☐ VHS ☐ TG ☐ FS ☒ SWF ☐ EWM ☒ RCG
☐ RG ☐ AC ☐ NZMS ☒ ZM ☒ HC

Bidirectional threats

7

Specific conductivity (µS/cm)

234

Dissolved Calcium (mg/L)

22.7

AIS Explorer ZM risk rating

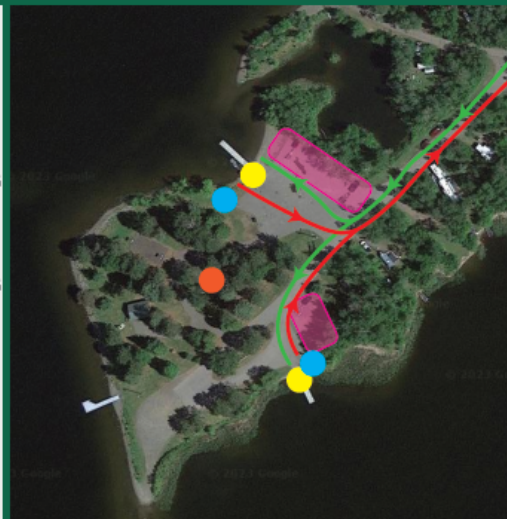
.343

AIS Explorer SS risk rating

.0085

Nearest Decontamination

22 miles



Whitewater Lake is classified as: HIGH RISK

Due to

- High use access
- Several local infestations
- Limited access to mitigation



Whitewater Lake Public Water Access Site

Hoyt Lakes, MN

KEY
 ● = boat ramp ● = signage ← = inbound route
 ● = tools/equipment ○ = parking → = outbound route



Access Recommendations:

Watercraft cleaning equipment:
Inbound/Outbound

- Solar powered Wayside cleaning system: CD3 Systems
- Clean Drain Dry wrap
- Aqua Weed Stick
- Extendable Brush
- Plug wrench
- Pressurized air hose
- Vacuum

Signage: Inbound/Outbound

- Install Clean Drain Dry & Educational signage at access entry
- Risk Species:
 - Chinese mystery snail, Curly-lead pondweed, Purple loosestrife
- Signage near watercraft cleaning equipment
- Describes how and why to use cleaning equipment

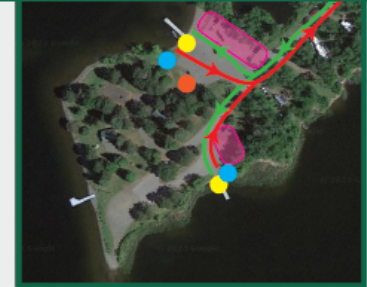
Community Outreach, Prevention, & Awareness Recommendations:

Distribute Clean Drain Dry outreach materials

- Brushes, boat towels, brochures, decals, other Clean Drain Dry branded products are available at CleanDrainDry.org
- Use watercraft inspectors or volunteer outreach at local events, fairs, bait shops, visitor centers, and retailers to educate the community and distribute outreach materials.

Media & Marketing

- Deploy Clean Drain Dry outreach campaign
 - Streaming ads, outdoor billboards, gas stations, social, radio, print ads
 - Targeted social media: Facebook and Instagram ads
 - Geofenced digital web and mobile device ads
 - Target users who have visited certain areas. Setting up digital fences around this access and others around it allow us to target users continually.



Common Themes

AIS Signage was not present

AIS prevention tools and cleaning stations were not present

Watercraft inspectors were not stationed

AIS decontamination was not available

All sites were within 10 miles of AIS



Waysides

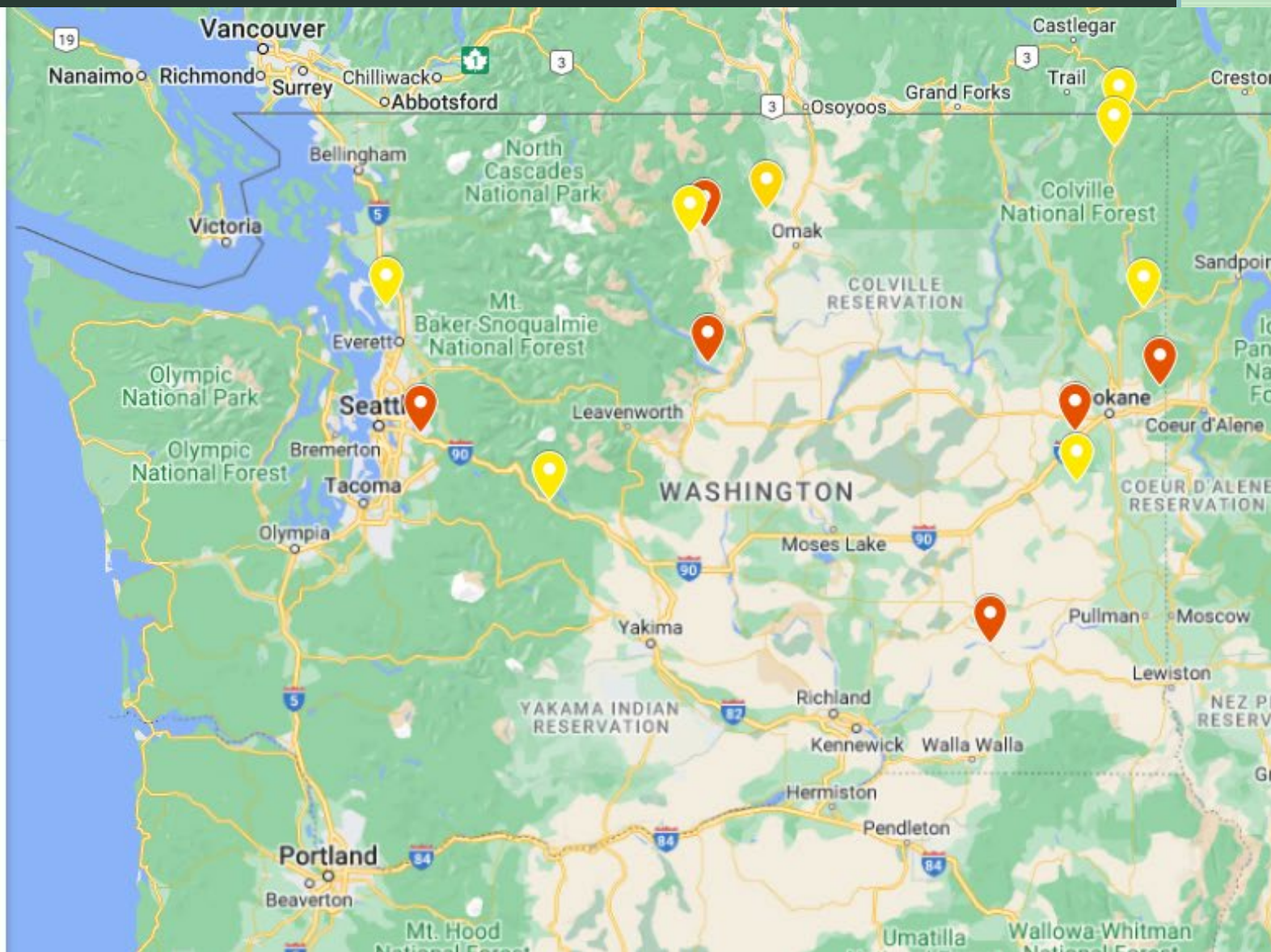
- Lyons Ferry State Park
- Lake Chelan - Manson Public Access
- Pearrygin Lake State Park
- Silver Lake Public Access
- Lake Sammamish State Park
- Newman Lake



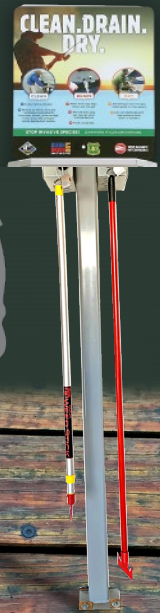
Roadsides



- Badger Lake
- Boundary Dam Forbey Rec Area
- Conconully Lake
- Diamond Lake
- Lake Easton
- Lake Goodwin - Snohomish County
- Metaline Public Boat Launch
- Patterson Lake







CD2 CATALOG

Store / CD2 Catalog



All Products



Outreach



Education Materials



Watercraft Inspection Materials



AIS Prevention Tools



Cleaning Stations



Clean.Drain.Dry. Kits



Posters & Signage

what are Invasive
SPECIES?

Public Service
Announcements



Stop Aquatic Hitchhikers!



Display + event materials



Large Format





THANK YOU!

Zach Burnside, ZBurnside@WildlifeForever.org

